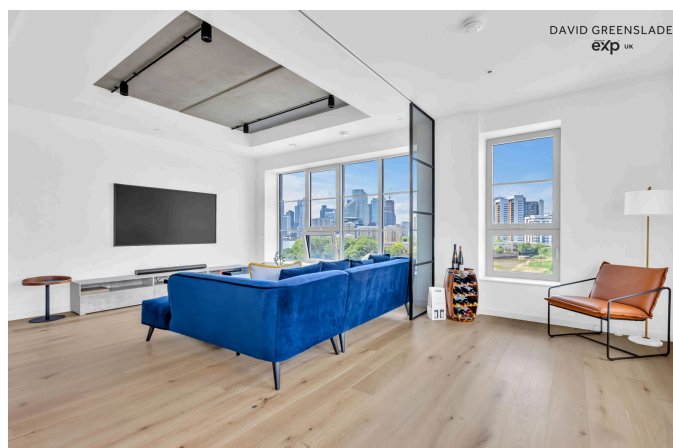
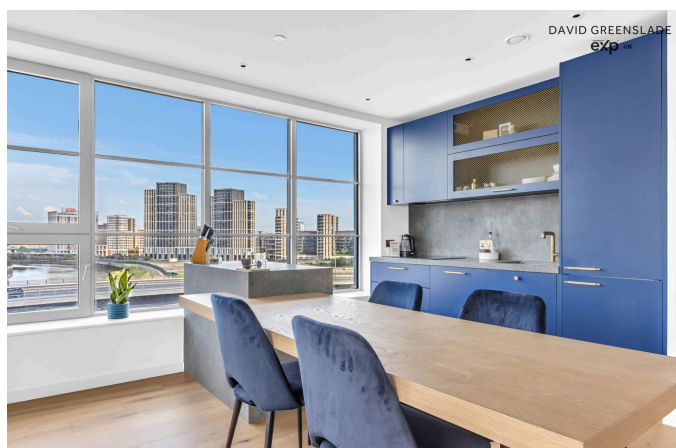
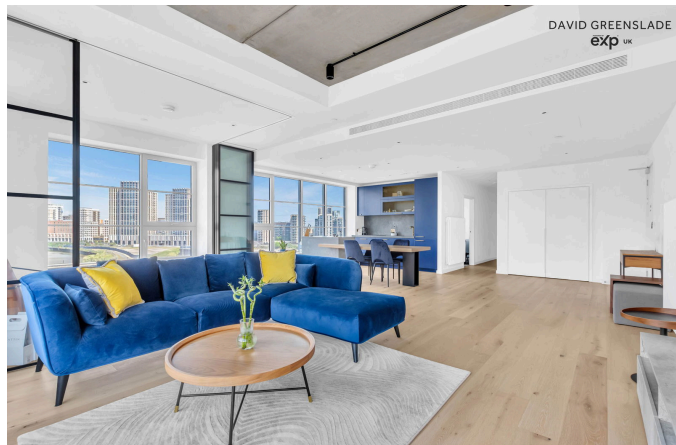
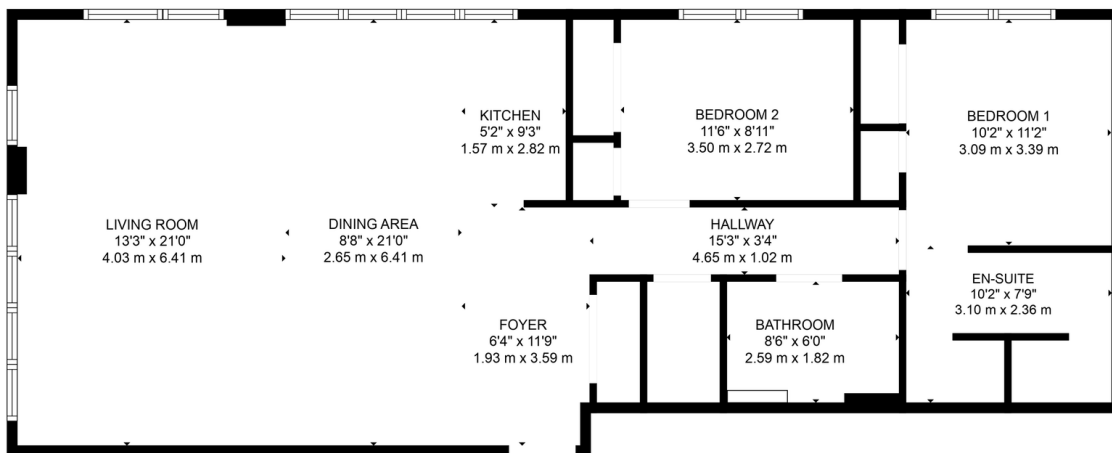


Flat 610 Douglass Tower , 9 Goodluck Hope Walk, Guide Price £825,000

2 2 1



- Secure Underground Parking
- Indoor & Outdoor Swimming Pools
- Wellness Centre including Scandinavian Outdoor Sauna
- Cinema Room
- Incredible Co-worker Space on the 29th Floor with stunning views.
- Concierge
- Two Double Bedrooms
- Two Bathrooms
- Stunning Views
- Close To Transport Links



TOTAL: 1080 sq. ft, 100 m²
FLOOR 1: 1080 sq. ft, 100 m²

FLOOR PLAN CREATED BY CURBICASA APP. MEASUREMENTS DEEMED HIGHLY RELIABLE BUT NOT GUARANTEED.



Luxury Living with River Views, Amenities, and a Vibrant Lifestyle on Your Doorstep

Welcome to Douglass Tower, an iconic part of the sought after Goodluck Hope development, a riverside neighbourhood designed for modern London living.

This sixth floor, two bedroom, two bathroom apartment, one of only ten extra spacious designs in the entire building. With over 800 square feet of living space and a unique winter garden, it offers an exceptionally spacious and light filled interior that is both functional and refined. The expansive, open plan kitchen and living area features sleek contemporary finishes, integrated appliances, and floor to ceiling windows framing spectacular views of the River Thames, Canary Wharf, and the Shard.

The apartment also includes the rare benefit of secure underground parking, an invaluable asset in a location with growing connectivity, now including a brand new bus service to complement the nearby Jubilee Line and DLR routes from Canning Town.

But life at Goodluck Hope is about so much more than just a beautiful home. It's a lifestyle that blends wellness, convenience, and community, all within your own building. As a resident of Douglass Tower, you will have exclusive access to a 25 metre indoor pool along with an outdoor pool, the choice of four fully equipped gyms with personal training space, and a complete wellness suite with sauna and steam room, all included and all just a lift ride away.

When it's time to unwind, enjoy the private cinema or settle into one of the stylish communal lounges. For those working remotely, coworking spaces offer a professional environment with no commute required. The Orchard Dry Dock, a beautifully restored historic structure offers a peaceful communal spot with panoramic river views, perfect for morning coffee or a quiet moment at sunset.

Step outside and explore a thriving local scene. Start your day with coffee and pastries at Layers Bakery or enjoy a laid back brunch at The Orchard Café. Stock up on fresh produce and local favourites at Taylors of Goodluck Farm Shop, or unwind with a drink at nearby riverside bars.

For more to discover, London City Island's Mā bar and kitchen, The Lockdown Room, and Homemade London offer a range of food and social experiences. And for a break from the city buzz, green spaces like Bow Creek Ecology Park and the River Lea Path are right on your doorstep.

Set on the historic Leamouth Peninsula, Goodluck Hope offers the rare blend of riverside tranquillity, urban energy, and first class amenities. This apartment is more than a home; it's a lifestyle.