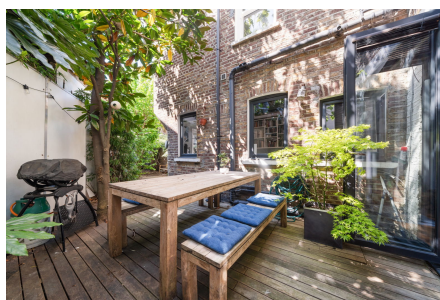


## 2 Ashmore Road , Maida Vale

Offers Over £1,500,000

🛏 4 🍳 3 🛋 1



A Unique Three Storey Family Home With Soul, Space And A Story. A rare blend of Victorian charm and modern Scandi style, with four bedrooms, floor-to-ceiling windows, a private garden and roof terrace. Just minutes from Queen's Park & Westbourne Park.

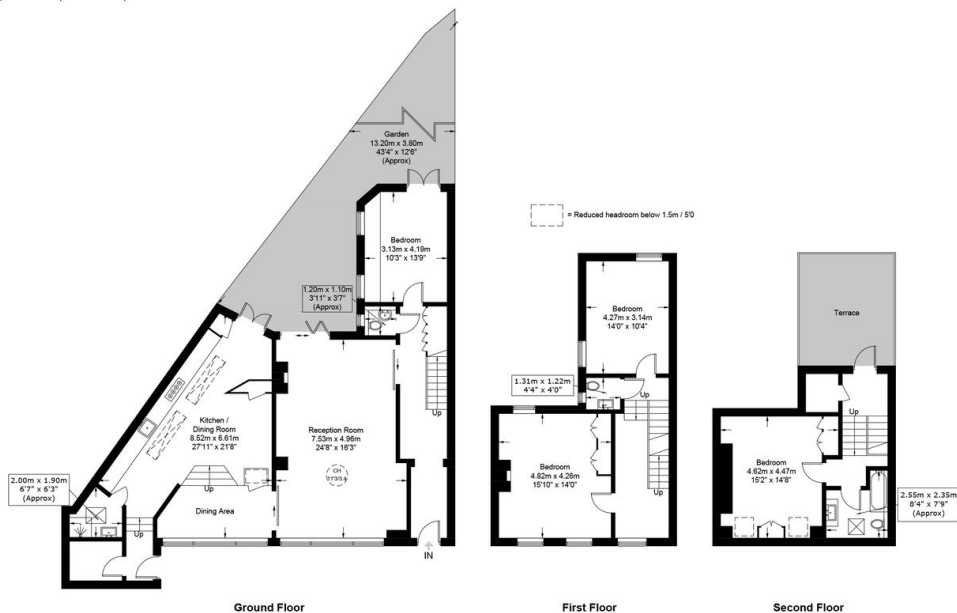
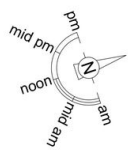
## Key Features

- A unique three-storey, 4 bedroom, family home family with soul, space and a story - where Victorian character meets Scandi
- High ceilings, large floor-to-ceiling windows and custom wood floors create an inviting, uplifting feel throughout
- Private roof terrace (south facing sun-trap) - ideal for slow coffee mornings or drinks as the sun sets
- 3 further double bedrooms across the upper floors offer room for everyone to find their own space
- Located on a peaceful street just a short stroll from Queen's Park and Westbourne Park stations
- Over 2000 sqft of beautifully reimagined home full of warmth, light and everyday ease
- Generous, light-filled kitchen & dining area with sleek handleless units, roof lanterns and direct access to the garden
- Private, serene, decked garden access form kitchen, living room and bedroom.
- Subtle Scandinavian influence flows through the layout, colour palette and bespoke joinery
- Owned by the same family for over 20 years-now ready for its next chapter

**Ashmore Road, W9**

**Approximate Gross Internal Area = 2135 sq ft / 198.4 sq m**

Restricted Height = 5 sq ft / 0.5 sq m



PRIME | PERSPECTIVES

This plan is for layout guidance only and is not drawn to scale unless stated. All dimensions, including windows, doors, and the Total Gross Internal Area (GIA), are approximate. For precise measurements, please consult a qualified architect or surveyor before making any decisions based on this plan.



Certified  
Property  
Measurer