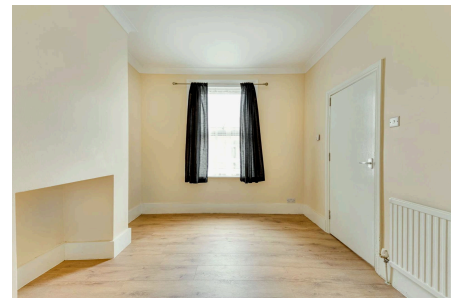


Your Logo

Besley Street, London, SW16 6BG

£600,000

 3  1  2

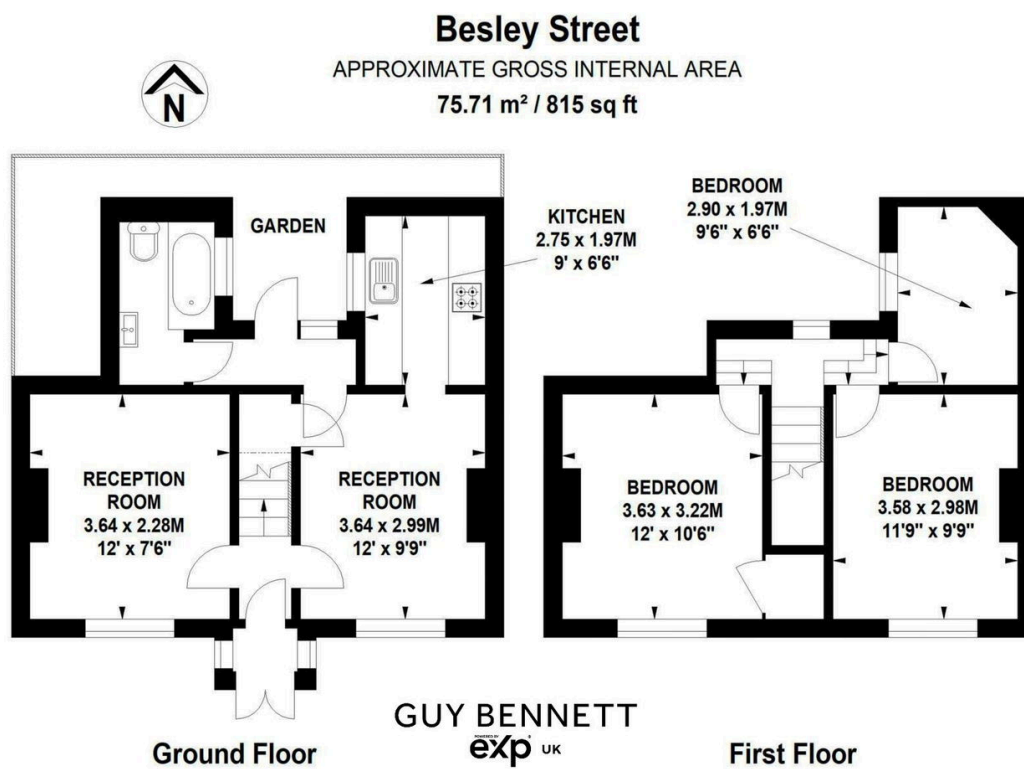


This charming, double-fronted end-of-terrace house is nestled at the quiet end of a peaceful residential cul-de-sac.

Property reference GB1089

Key Features

- Double fronted house
- Three bedrooms
- Kitchen
- Courtyard garden
- No onward chain
- End of terrace
- Two reception rooms
- Bathroom
- Central location
- Property ref: GB1089



SIZE AND DIMENSIONS ARE APPROXIMATE, ACTUAL MAY VARY