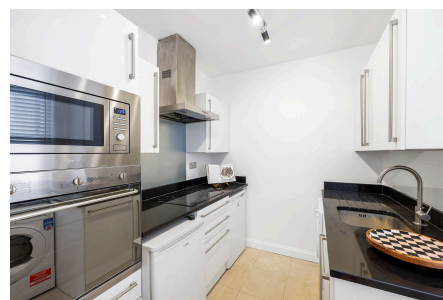
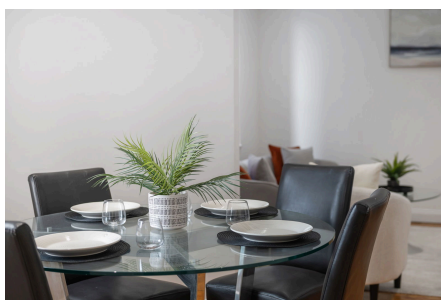


## Basil Street, Knightsbridge, SW3

£800,000 - £895,000

2 1 1



PLEASE QUOTE JW0326 – GUIDE PRICE 800K - £895K – Beautiful two double bedroom, ground floor apartment (684 Sq.Ft) superbly situated in a prestigious portered mansion block in the heart of Knightsbridge, moments from wonderful Hyde Park and high end shops including Harrods and Harvey Nicholls. The property offers bright and spacious accommodation with elegant interiors and high quality finish throughout – the perfect blend of luxury and convenience in this extremely sought after and desirable location. Features include a wonderful 19'11 reception room, well equipped kitchen, stylish bathroom, inbuilt storage, gas central heating, neutral décor and quality floor coverings.

## Key Features

- BEAUTIFUL 2 BED GROUND FLOOR APARTMENT (684 SQ.FT)
- DESIRABLE KNIGHTSBRIDGE LOCATION MOMENTS FROM HYDE PARK
- HIGH QUALITY FINISH THROUGHOUT
- SECURE ENTRY
- CLOSE TO TRANSPORT LINKS AND HIGH END AMENITIES
- PRESTIGIOUS RED BRICK MANSION BLOCK
- BRIGHT AND SPACIOUS ACCOMMODATION
- PORTER SERVICES
- LONG LEASE AND NO CHAIN
- PLEASE QUOTE JW0326

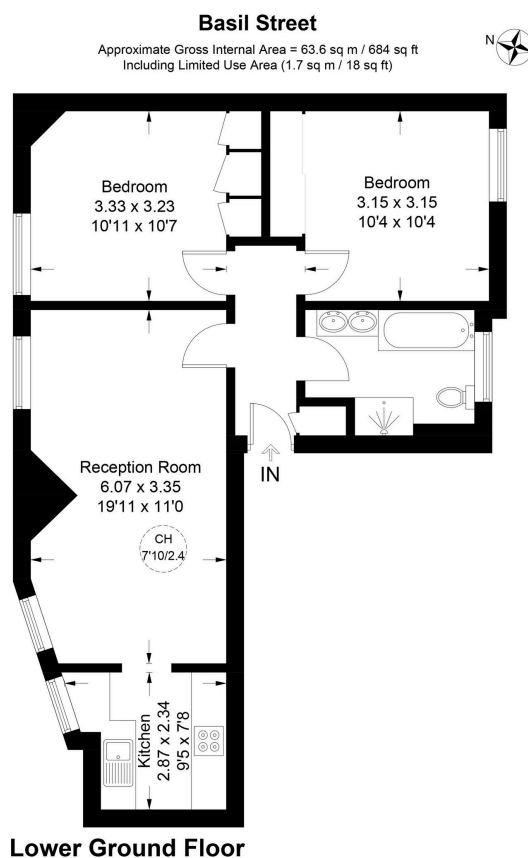


Illustration for identification purposes only, not for valuation purposes, measurements are approximate, not to scale. IPMS2