

Flat 3, 107, Stanmore Hill,

Guide Price £360,000

1 1 1



Ref: MS0129

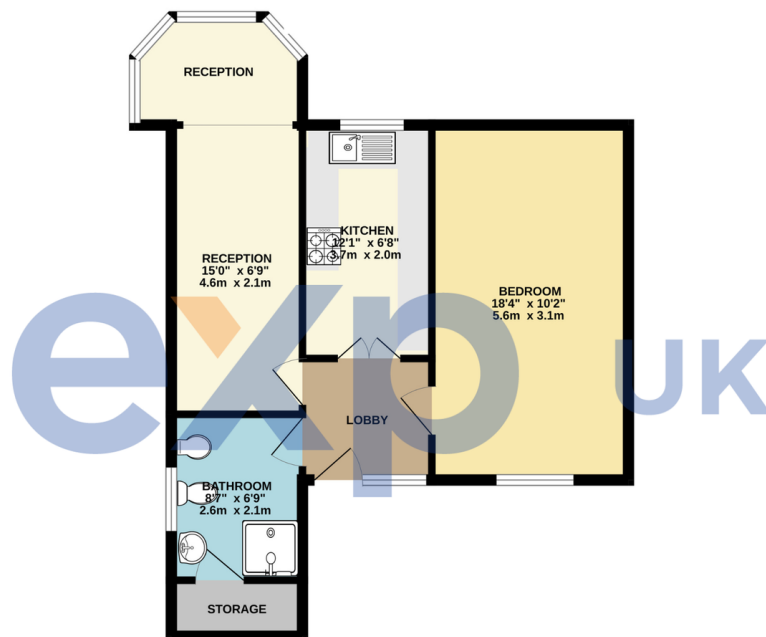
Distinctive Period Flat with London Skyline Views

Perched on the top floor of a characterful period building on Stanmore Hill, this one double bedroom apartment offers a unique living experience with spectacular cityscape views stretching across London. The property's most striking feature is its distinctive castle-style turret, currently housing the living room window, which provides both architectural interest and an exceptional vantage point.

Stanmore Underground Station (Jubilee Line) for swift connections to central London
This remarkable apartment represents a rare opportunity to acquire a home with genuine historical character and architectural distinction, perfect for those seeking a residence that transcends the ordinary while enjoying all the conveniences of modern urban living.

- Spacious Double Bedroom
- Quirky Living Dining Room with Turret Style Sitting Area
- Spacious Fitted Bathroom
- Top Floor
- Local Shops, Pubs and Restaurants of Stanmore Hill
- Separate Fitted Country Style Kitchen with Butler Sink
- Views Over London's Cityscape
- Communal Balcony
- Period Features
- Easy Reach of Stanmore Broadway & Stanmore Tube Station

2ND FLOOR
534 sq.ft. (49.6 sq.m.) approx.



TOTAL FLOOR AREA: 534 sq ft (49.6 sq.m.) approx.
Whilst every attempt has been made to ensure the accuracy of the floorplan contained here, measurements of doors, windows, rooms and any other items are approximate and no responsibility is taken for any errors, omission or misstatement. This plan is for illustrative purposes only and should be used as such by any prospective purchaser. The services, systems and appliances shown have not been tested and no guarantee as to their operability or efficiency can be given.
Made with Metaplan 12/2015