

Honeybrook Road, Clapham, SW12

Guide Price £600,000 - £650,000

2 1 1



PLEASE QUOTE JW0326 - GUIDE PRICE £600K - £650K - Beautiful two double bedroom ground floor apartment (742 Sq.Ft) with delightful paved private garden, ideally situated moments from Clapham South station and wonderful Clapham Common. The property offers light and spacious accommodation, superbly finished with stylish interiors and high quality finish, whilst still retaining a period appeal and character. Features include a gorgeous dual aspect open plan reception/kitchen, stylish shower room, ample inbuilt storage as well as a versatile basement area, gas central heating, double glazing, quality floor coverings and neutral decor.

Key Features

- PLEASE QUOTE JW0326
- STUNNING 2 BED GROUND FLOOR APARTMENT (742 SQ.FT)
- SUPERB CLAPHAM COMMON LOCATION
- PERIOD APPEAL AND STYLISH INTERIORS
- BRIGHT AND SPACIOUS OPEN PLAN RECEPTION/KITCHEN
- SLEEK SHOWER ROOM
- BASEMENT
- PAVED PRIVATE GARDEN
- MOMENTS FROM CLAPHAM SOUTH STATION
- SHORT WALK TO VIBRANT AMENITIES

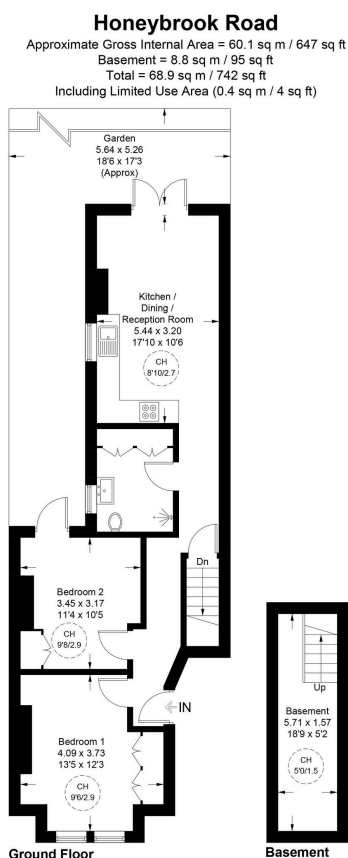


Illustration for identification purposes only, not for valuation purposes, measurements are approximate, not to scale. IPMS2