



NICK LOATES

POWERED BY
exp UK

Diamond Jubilee Way, Wokingham, RG40

Offers In Region Of £450,000

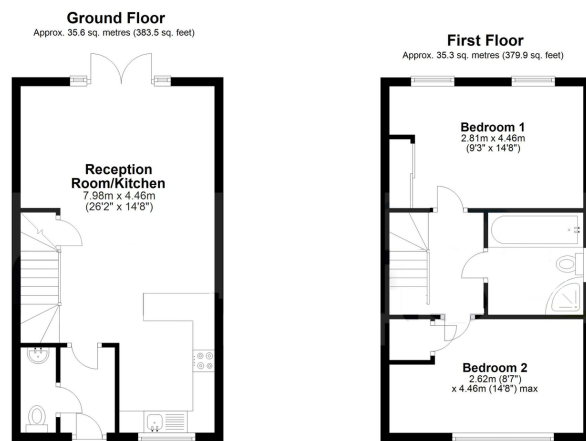
🛏 2 🚗 1 🛋 1



- Ref NL0627 - Watch The Video Tour Link Below
- Chain Free Sale
- South Facing Garden
- Freehold House
- Beautifully Presented Throughout
- Two Double Bedrooms
- Allocated Parking For Two Cars
- Integrated Appliances
- Excellent Transport Links Nearby
- Perfect First Home



Located on the highly sought-after Mulberry Grove development and built by the reputable Crest Nicholson approximately 10 years ago, this beautifully presented two-bedroom end-of-terrace home has been extensively upgraded by the current owners, with stylish touches throughout – including luxurious Venetian plastering that adds a unique and elegant finish to several interior spaces. The property offers bright, open-plan living with a contemporary fitted kitchen featuring integrated appliances, seamlessly flowing into a spacious living area. This space opens out onto a private, south-facing rear garden – perfect for entertaining or enjoying the sun. Upstairs, you'll find two generously sized double bedrooms along with a modern, well-appointed family bathroom. Ideally positioned within easy reach of Wokingham town centre and a range of local amenities, the home is also situated within popular school catchment areas & excellent transport links are nearby.



Total area: approx. 70.9 sq. metres (763.4 sq. feet)

Floor Plan measurements are approximate and are for illustrative purposes only. While we do not doubt the floor plans accuracy, we make no guarantee, warranty or representation as to the accuracy and completeness of the floor plan.

