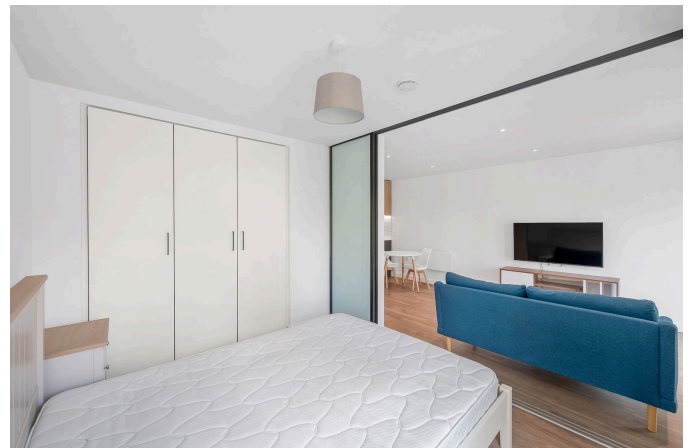


Fermont House, Beaufort Park

£350,000

1 bed 1 bath 1 car



- Manhattan Studio Apartment
- Private West Facing Balcony
- Separate sleeping area
- State of the Art Gym, Spa, Sauna & Jacuzzi onsite
- Close to Colindale Station (Northern Line)
- 1st Floor
- 478 sqft
- Contemporary Luxury Finish Throughout
- Shops, Restaurants and Cafes moments away
- Onsite Concierge

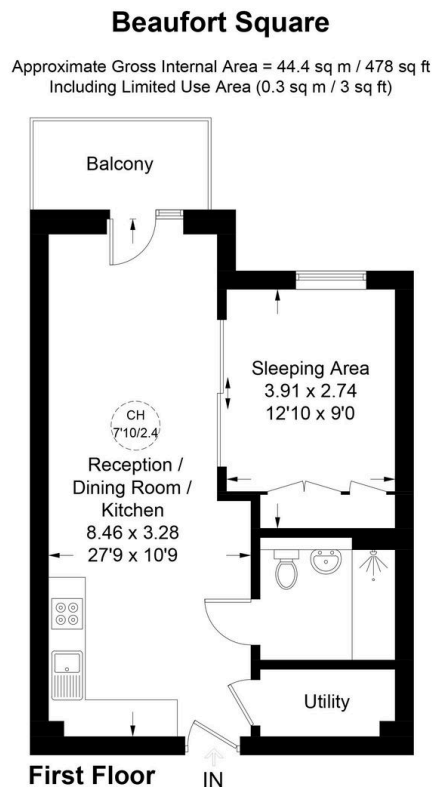


Illustration for identification purposes only, not for valuation purposes, measurements are approximate, not to scale. IPMS2

Stylish Studio with Private Balcony in Beaufort Park, NW9. Step into smart, contemporary living in this beautifully finished studio apartment, set within the sought-after Beaufort Park development by Berkeley Homes. Offering 478 sq. ft. of bright, well-designed space this first-floor residence is perfect for first-time buyers, professionals or investors looking for a high-spec home in a vibrant, well-connected London location.