



DANIEL ARCHER

exp<sup>®</sup> UK

@ daniel.archer@exp.uk.com

🌐 danielarcher.exp.uk.com

📞 07792 947 756



## Dowding House, SW20

Guide Price £139,500

🛏 2 🚿 1 🛋 1

- Beautiful Two Bedroom Top Floor Apartment
- Quiet Yet Convenient Central Location with Views
- Stylish Interiors and Neutral Finish
- Bright and Spacious Open Plan Reception/Kitchen
- Sole Access to Large Terrace (Un-Demised)
- Family Bathroom, White Suite
- Secure Access
- 85 Year Lease
- Close to Raynes Park Station and Amenities
- Property Ref; DA0587



Shared ownership

30% Shared ownership

Lease: 984 years Ground Rent:

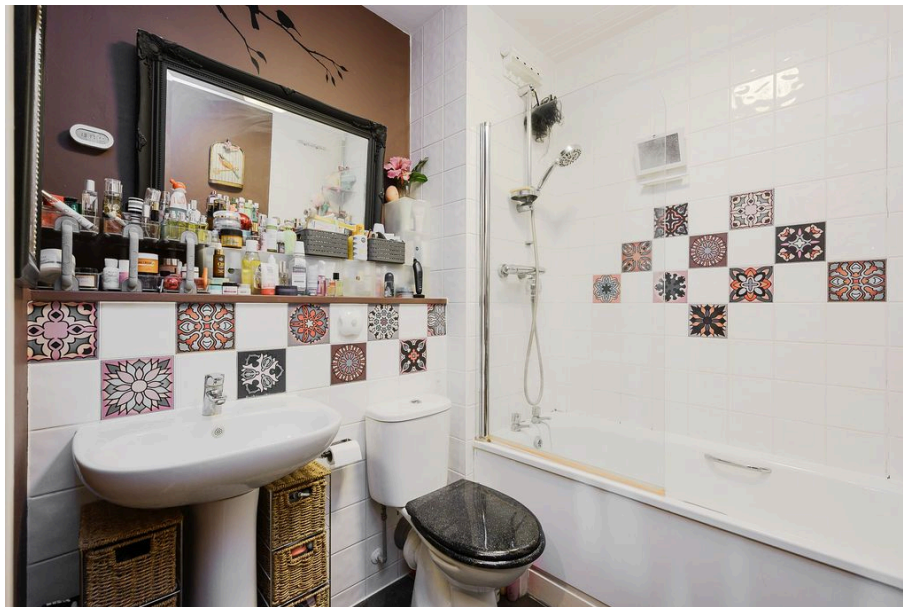
The leasehold assured rent paid by the lessee is £857.57

A wonderful two double bedroom top floor apartment located in this prestigious development within close proximity to Raynes Park Centre. This listing is for a 30% Shared Ownership

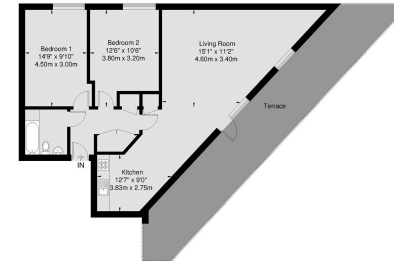
Fantastic two bedroom top floor apartment, superbly situated in a secure modern development in a quiet yet central position in the heart of Raynes Park. Featuring bright and spacious, well planned accommodation with stylish interiors, 984 year lease, and sole access to a large terrace (un-demised) with breath-taking views. Property Ref; DA0587







Dowding House  
Approx Gross Internal Area = 83.1 Sq m / 894 Sq Ft



Viewmedia © 2024  
Viewmedia.co.uk  
Whilst every attempt has been made to ensure the accuracy of this floor plan, measurements of doors, windows and rooms are approximate and no responsibility is taken for any error or omission. This illustration is for identification purposes only. Not drawn to scale, unless stated. Dimensions shown are to the nearest 1/2" and are to the points indicated by the arrow heads.

