

## Flat 3, Friarswood, Chipperfield Road,

Guide Price £525,000

2 1 1



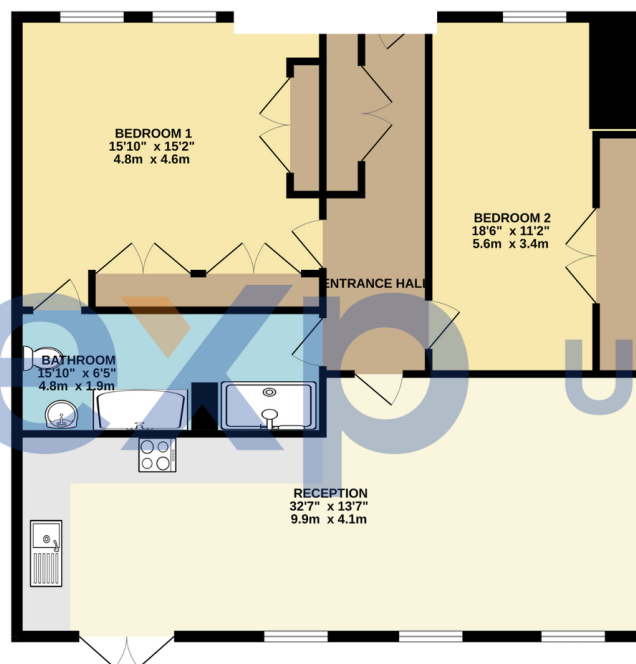
Ref: MS0129

### Elegant Ground Floor Maisonette in Historic Conversion

This exceptional ground floor maisonette offers approximately 1000 SQ FT (95 SQM) of beautifully presented living space within a prestigious conversion of the former Rudolph Steiner School, completed just three years ago within a private gated development of only eight exclusive residences, this distinctive property enjoys the security and privacy of a small, select community. Ideally positioned just off Chipperfield Road, this property offers the perfect balance of connectivity and tranquility. Enjoy easy access to Kings Langley High Street with its array of shops and amenities, while also being perfectly situated for scenic walks across Kings Langley Common, Chipperfield village, and the enchanting Chipperfield Woods

- 2 Double Bedrooms
- Impressive spacious Bathroom
- Modern Fitted Kitchen
- Water Softener and Private Rear Garden
- Gated Community
- Stunning Landscaped Private Garden
- 2 Allocated Parking Bays
- Chain Free
- Over 1000 SQ FT (95 SQM)
- Village Location

GROUND FLOOR  
1025 sq.ft. (95.2 sq.m.) approx.



TOTAL FLOOR AREA : 1025 sq.ft. (95.2 sq.m.) approx.  
Whilst every attempt has been made to ensure the accuracy of the floorplan contained here, measurements of doors, windows, stairs and any other items are approximate and no responsibility is taken for any omission or mis-statement. This plan is for illustrative purposes only and should be used as such by any prospective purchaser. The services, systems and appliances shown have not been tested and no guarantee as to their operability or efficiency can be given.  
Made with Metropac C1025