

Ely Place, IG8

PAUL BERG

POWERED BY
exp™ UK



Overs Offer £775,000
Freehold

Spacious Four-Bedroom Home in a Quiet Cul-de-Sac – Woodford Green, IG8

This well-maintained four-bedroom, two-bathroom family home is located in a peaceful cul-de-sac in Woodford Green. It offers plenty of space, with an L-shaped reception room leading into a bright conservatory, a fitted kitchen, and a master bedroom with an en-suite.

Outside, you'll find a large, well-kept garden, perfect for families or anyone who enjoys outdoor space. The property also benefits from a garage and off-street parking.

Situated within walking distance of Woodford Bridge and Chigwell Parade, this home is close to a variety of shops, cafes, and everyday amenities. It also offers easy access to Woodford and Chigwell Underground Stations, making commuting simple. Families will appreciate that the property falls within the catchment area for West Hatch Secondary School, adding to its appeal.

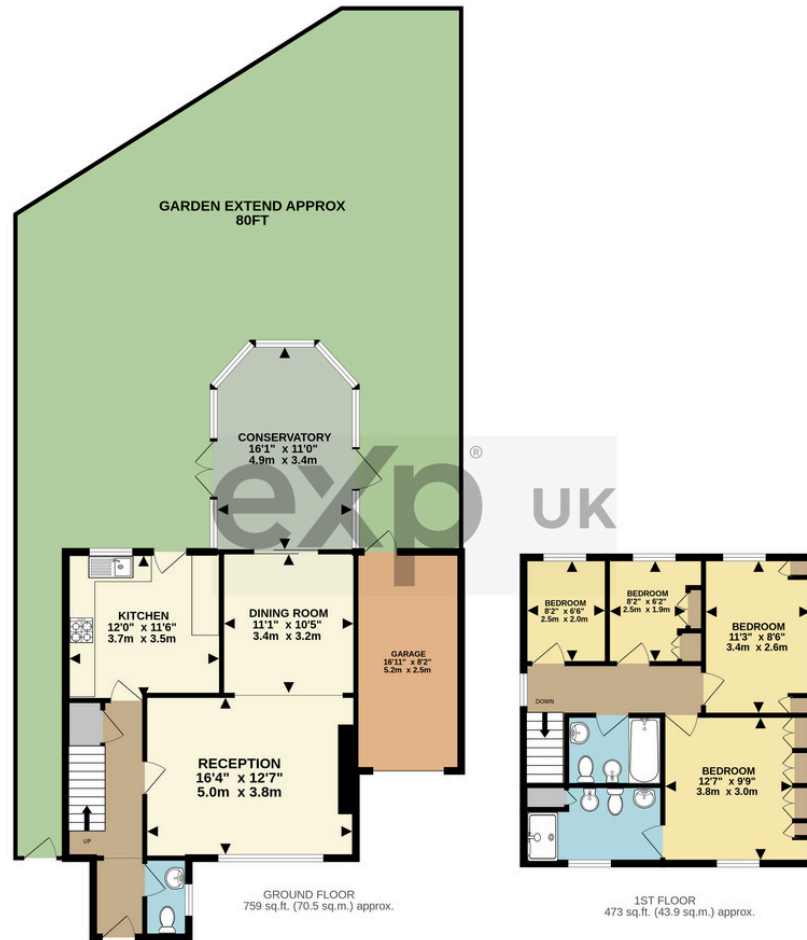
With plenty of potential to modernise or extend (STPP), this home is a fantastic opportunity for anyone looking to settle in a sought-after location. Properties like this don't stay on the market for long contact us today to arrange a viewing and see for yourself.



Tel: 07951 529 224

PAUL BERG

POWERED BY
exp™ UK



Council Tax: Band F
£3,159.00 per annum

Local Authority:
Epping Forest

Score	Energy rating	Current	Potential
92+	A		
81-91	B		82 B
69-80	C		
55-68	D	66 D	
39-54	E		
21-38	F		
1-20	G		

Website: paulberg.exp.uk.com
Email: paul.berg@exp.uk.com

