

## Carmalt Gardens, Putney, SW15

£1,750,000 - £1,950,000

5 2 3



PLEASE QUOTE JW0326 - GUIDE PRICE £1.75m - £1.95m - Superb three storey five bedroom end of terrace property (2,210 Sq.Ft) with private garden and no onward chain, ideally situated in the heart of Putney, moments from transport links and amenities, and just a short walk from the banks of the Thames. The property offers bright and spacious accommodation laid out over four floors, with a wealth of period appeal and character, with enormous potential for complete restoration, re-configuration and refurbishment to create a truly wonderful family home. Features include three impressive reception rooms, a large lower level kitchen/diner, two bath/shower rooms, high ceilings, ornate detailing, original features and period fireplaces.

## Key Features

- SUPERB 5 BED END OF TERRACE PROPERTY (2,210 SQ.FT)
- CHARACTER APPEAL AND ORIGINAL FEATURES
- 3 RECEPTION ROOMS
- PRIVATE GARDEN
- CLOSE TO PUTNEY STATION AND FASHIONABLE AMENITIES
- FANTASTIC PUTNEY LOCATION
- ENORMOUS SCOPE TO UPGRADE AND REFURBISH
- 2 BATH/SHOWER ROOMS
- NO CHAIN
- PLEASE QUOTE JW0326

### Carmalt Gardens

Approximate Gross Internal Area = 205.3 sq m / 2210 sq ft

(Excluding Loft & Store)

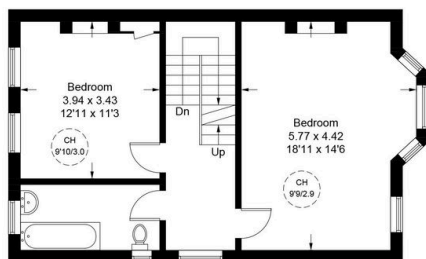
Including Limited Use Area (1.8 sq m / 19 sq ft)

Loft = 48.6 sq m / 523 sq ft

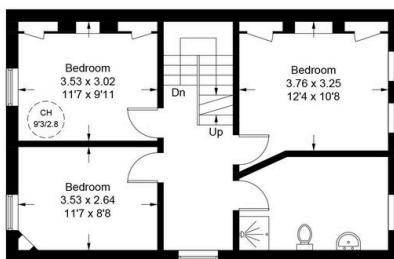
Store = 2.1 sq m / 23 sq ft



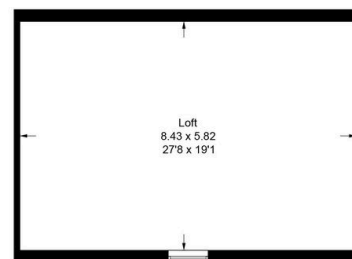
= Reduce head height below 1.5m



First Floor



Second Floor



Lower Ground Floor



Ground Floor

Illustration for identification purposes only, not for valuation purposes, measurements are approximate, not to scale. IPMS2