



WILL CAMPBELL

exp<sup>®</sup> UK

@ will.campbell@exp.uk.com

willcampbell.exp.uk.com

07518 198 785

## Harberson Road, London, SW12 9TT

£625,000

🛏️ 2 🚿 2 🛋️ 1

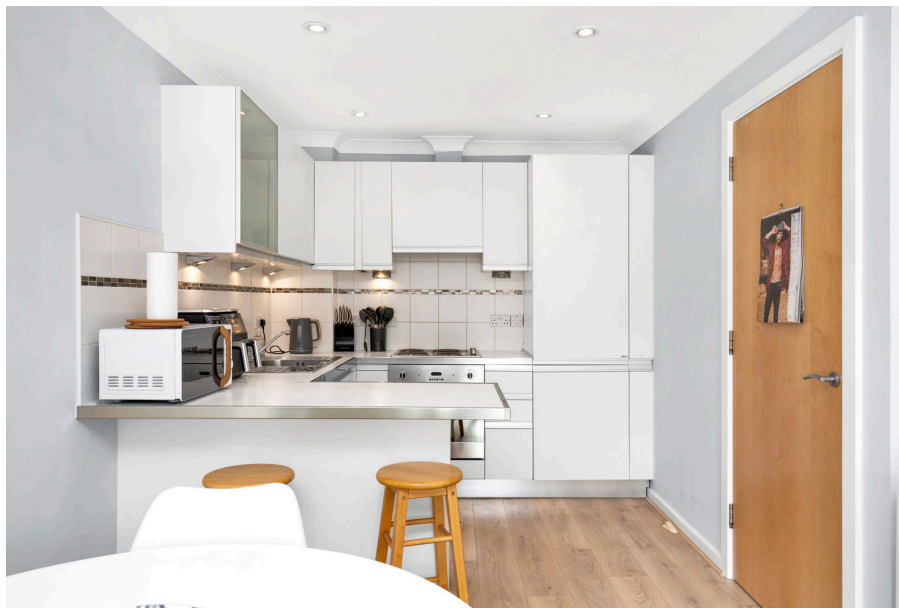
- Please quote for all enquiries: WC0847
- Two Double Bedrooms
- Immaculately Finished Throughout
- Gated Off Street Parking
- Close to Balham Stations
- Set within a Modern Gated Development in the Heart of Balham
- Open-Plan Entertaining
- Principle Bedroom with Ensuite Shower & Juliet Balcony
- Secure Entry
- No Onward Chain

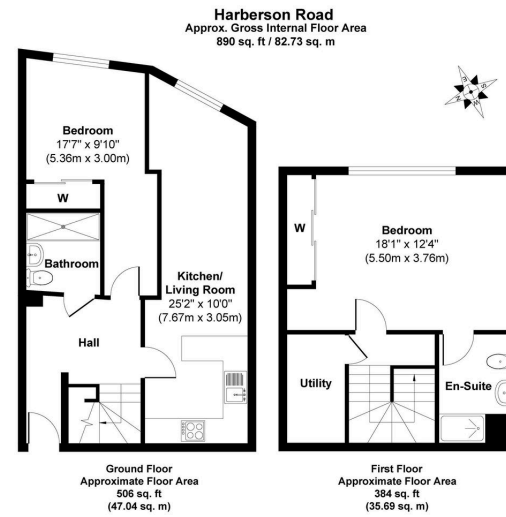


Please quote for all enquiries: WC0847

Immaculate Split-Level 2 Bedroom 2 Bathroom Flat in Modern Gated Development with Off Street Gated Parking

This beautifully presented first and second-floor flat offers generous accommodation, featuring contemporary décor and high-quality finishes throughout. The property boasts a bright open-plan reception room and modern kitchen with ample space for a dining table, perfect for both relaxing and entertaining. Two spacious double bedrooms with built-in storage, a modern family bathroom and ensuite shower room complete the accommodation. Gated off street parking set off Harberson Road.





Whilst every attempt has been made to ensure the accuracy of the floorplan shown, all measurements, positioning, fixtures fittings and any other data shown are an approximate interpretation for illustrative purposes only and are not to scale. No responsibility is taken for any errors, omission, mis-statement or use of data show  
 Produced by Home Focus Studio LTD

