

## St. Mary's Grove, W4

£1,800PCM (Deposit: £2,076)

1 1 1



	Current	Potential
Very energy efficient - lower running costs		
(92 plus) <b>A</b>		
(81-91) <b>B</b>		
(69-80) <b>C</b>		
(55-68) <b>D</b>	63	64
(39-54) <b>E</b>		
(21-38) <b>F</b>		
(1-20) <b>G</b>		
Not energy efficient - higher running costs		

Tax Band: C Furnished: Furnished

Please quote MG1175 for all enquiries.

Stunning, Recently Renovated One-Bedroom Split-Level Flat in Grove Park, Chiswick.

A beautifully refurbished one-bedroom split-level flat, situated on the top floor of a charming period conversion on a quiet street, moments away from the shops and restaurants of Fauconberg Road.


## Key Features

- Please quote MG1175 for all enquiries.
- Split Level
- Open Plan
- Top Floor
- Close to transport links
- 1 Bedroom Flat
- Recently refurbished
- Furnished
- Quiet Residential Street
- Short walk to shops and restaurants

### St. Marys Grove

Approximate Gross Internal Area = 50.7 sq m / 546 sq ft  
Including Limited Use Area (6.7 sq m / 72 sq ft)



 = Reduce head height below 1.5m

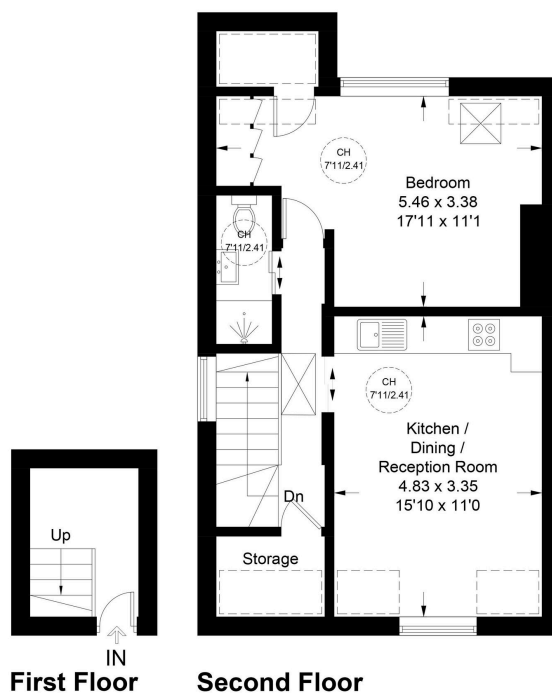


Illustration for identification purposes only, not for valuation purposes.  
measurements are approximate, not to scale.