



DANIEL ARCHER

exp[®] UK

@ daniel.archer@exp.uk.com

🌐 danielarcher.exp.uk.com

☎ 07792 947 756

The Downs, West Wimbledon, SW20

£825,000

🛏 2 🚿 2 🛋 1

- Beautiful Two Bedroom Split Level Flat (959 Sq.Ft)
- Sought After Development
- Modern Interiors and Neutral Finish
- Dual Aspect Reception Room
- Separate Well Equipped Kitchen
- Upstairs Bathroom, Principal En-Suite and Guest WC
- Private Patio Opening onto Communal Gardens
- Allocated Parking Space
- Close to Excellent Transport Links, Schools and Amenities
- Property Ref: DA 0587

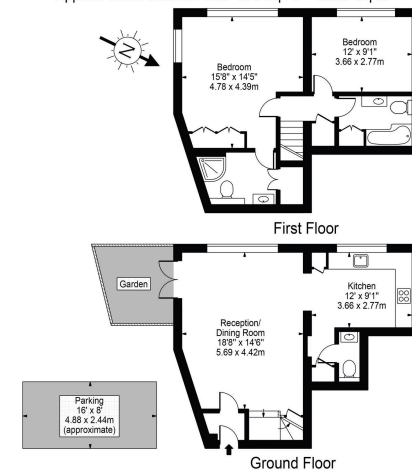


Looking for a house on the slopes of Wimbledon? This beautifully presented two bedroom, two bathroom property could be the answer, accommodation arranged over ground and first floor (959 Sq.Ft) with allocated parking space, private entrance and French doors to a garden area which opens to attractive communal gardens, set in a superb location a short distance of Wimbledon Common and Wimbledon Village. Offering bright and spacious accommodation over two floors with stylish interiors and neutral décor throughout. Wimbledon & Raynes Park stations nearby.





Princess Court, SW20
Approx. Gross Internal Area 976 Sq Ft - 90.67 Sq M



For Illustration Purposes Only - Not To Scale Floor Plan by Mira Nikolova Photography
This floor plan should be used as a general outline for guidance only and does not constitute in whole or in part an offer or contract.
Any intending purchaser or lessee should satisfy themselves by inspection, searches, enquiries and full survey as to the correctness of each statement.
Any areas, measurements or distances quoted are approximate and should not be used to value a property or be the basis of any sale or let.

