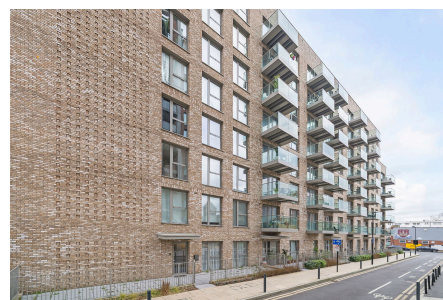


## Thunderer Street, East Ham, E13

Guide Price £500,000 - £550,000

3 2 1



PLEASE QUOTE JW0326 - Spacious and modern three bedroom ground floor apartment (1,278 Sq.Ft) set within a sought after development within just a short walk of Upton Park station. Boasting private patio garden, as well as access to well maintained communal gardens and residents roof terrace, the property provides bright and spacious accommodation with stylish interiors and neutral finish throughout - the perfect blend of comfort and convenience for a modern lifestyle. Features include a fantastic 32' open plan reception/kitchen, modern bathroom and principal en-suite, gas central heating, double glazing, quality floor coverings and neutral decor. The property further benefits from secure parking and residents gym.

## Key Features

- MODERN 3 BED, 2 BATH, GROUND FLOOR APARTMENT (1,278 SQ.FT)
- SPACIOUS ACCOMMODATION AND MODERN FINISH
- PRIVATE PATIO
- RESIDENTS ROOF TERRACE AND GYM
- CLOSE TO UPTON PARK STATION AND AMENITIES
- SOUGHT AFTER MODERN DEVELOPMENT
- LIGHT AND SPACIOUS 32' RECEPTION/ KITCHEN
- SECURE PARKING
- LONG LEASE
- PLEASE QUOTE JW0326

### Thunderer Street

Approximate Gross Internal Area = 118.7 sq m / 1278 sq ft  
Including Limited Use Area (0.7 sq m / 7 sq ft)

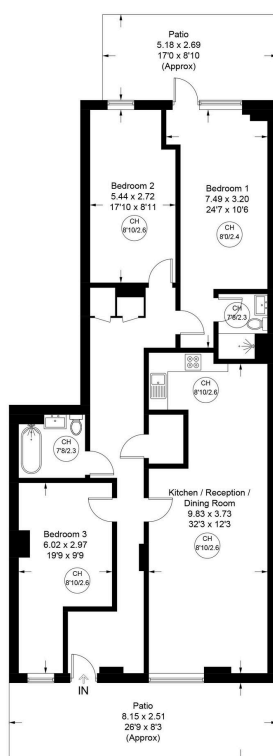


Illustration for identification purposes only, not for valuation purposes, measurements are approximate, not to scale.