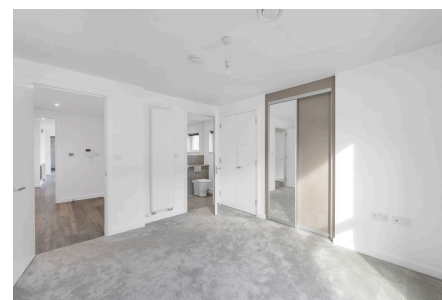


Mill Hill Road, W3

Fixed Price £580,000

2 2 1



INCENTIVES TOWARDS DEPOSIT CONTRIBUTION or SDLT **

Please quote MG1175 for all enquiries

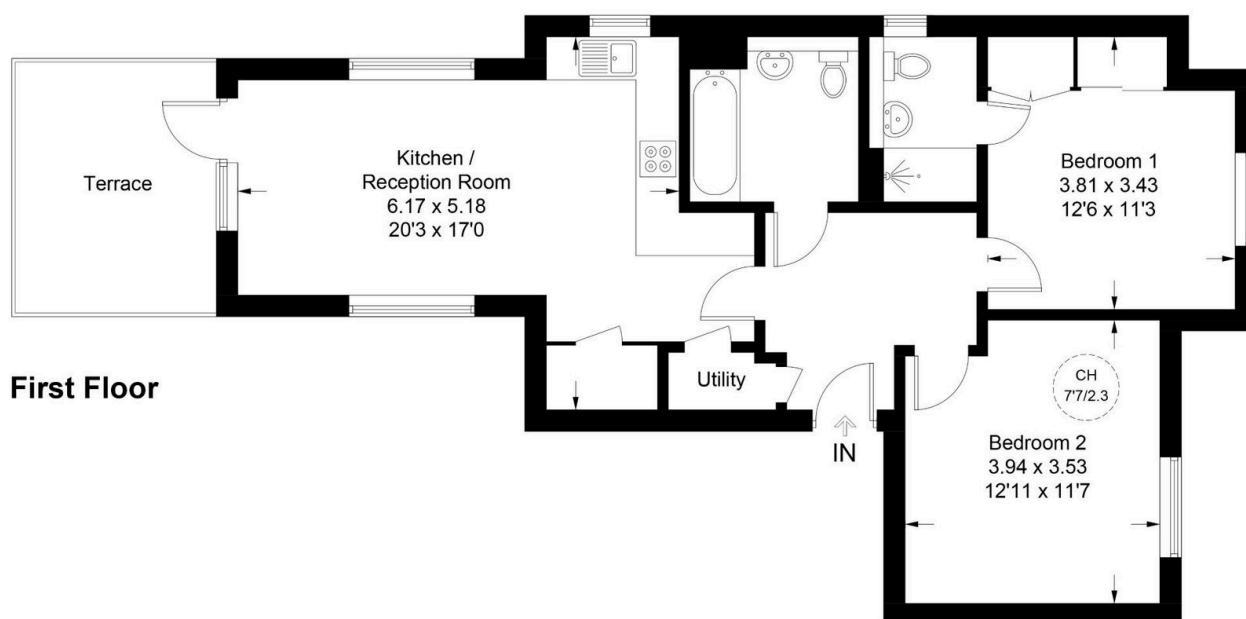
Discover modern living in this brand-new, contemporary 768 sqft two-bedroom, two-bathroom first-floor apartment, ideally situated in a prime West London location right on the doorstep of the Mill Hill Park Conservation Area. Within walking distance of Acton Town Station (Piccadilly & District Lines) and with easy access to Acton Mainline Station (Elizabeth Line), this home is perfect for professionals and families alike.

Key Features

- INCENTIVES TOWARDS DEPOSIT CONTRIBUTION or SDLT **
- Stunning Contemporary Kitchen
- Large enclosed private terrace
- Easy access to Tube & Elizabeth Line
- Short walk to shops & restaurants
- Please quote MG1175 for all enquiries
- 2 Bedrooms with 2 Bathrooms (one ensuite)
- Quiet Location
- Close to Gunnersbury Park
- First Floor Apartment with secure entry system

Mill Hill

Approximate Gross Internal Area = 71.4 sq m / 768 sq ft
Including Limited Use Area (0.9 sq m / 10 sq ft)



First Floor

Illustration for identification purposes only, not for valuation purposes,
measurements are approximate, not to scale.