

Castlecombe Drive, Putney Heath, SW19

Guide Price £900,000 - £995,000

4 2 2



PLEASE QUOTE JW0326 - GUIDE PRICE £900K - £995K - Stunning four bedroom extended terraced house (1,685 Sq.Ft) boasting balcony, attractive garden with garden room/home office and planning permission for off street parking to front, superbly situated close to the open spaces of Putney Heath. The property has been beautifully upgraded by the current owner, offering flowing contemporary style open plan living space with stylish interiors and high quality finish throughout - the perfect blend of luxury and convenience. Features include an inviting double length reception room, rear dining area opening onto the garden, high spec fitted kitchen, family bathroom and downstairs WC, luxury principal bedroom suite, gas central heating, double glazing, quality floor coverings and neutral decor.

Key Features

- STUNNING 4 BED EXTENDED TERRACED HOUSE (1,685 SQ.FT)
- ULTRA-STYLISH OPEN PLAN STYLE LIVING SPACE
- HIGH SPEC FITTED KITCHEN
- PRIVATE GARDEN WITH GARDEN ROOM/ HOME OFFICE
- CLOSE TO TRANSPORT LINKS, SCHOOLS AND AMENITIES
- SOUTHFIELDS/PUTNEY HEATH LOCATION
- FLOWING RECEPTION/DINING AREA
- LUXURY PRINCIPAL BEDROOM SUITE, FAMILY BATHROOM AND WC
- PLANNING PERMISSION FOR OFF STREET PARKING
- PLEASE QUOTE JW0326

Castlecombe Drive

Approximate Gross Internal Area = 147.5 sq m / 1588 sq ft
Including Limited Use Area (17.5 sq m / 188 sq ft)
(Excluding Void)
Garden Room = 9.0 sq m / 97 sq ft
Total = 156.5 sq m / 1685 sq ft

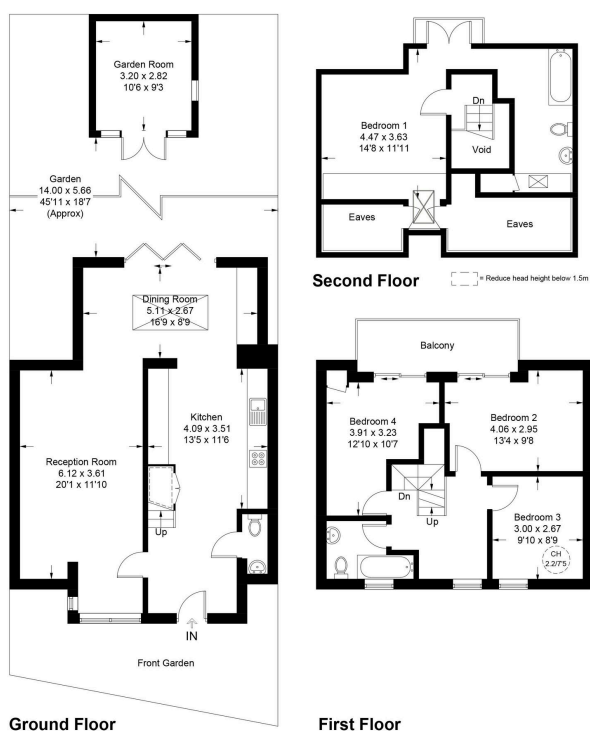


Illustration for identification purposes only, not for valuation purposes, measurements are approximate, not to scale.