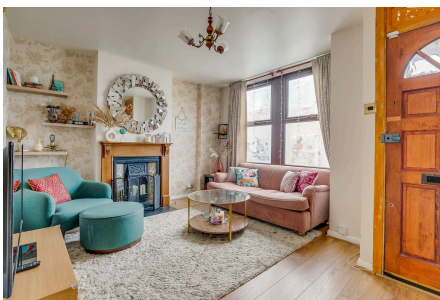


Greyhound Terrace, Streatham, SW16

£525,000

🛏 2 🚿 2 🛋 1



PLEASE QUOTE MR0560- Well presented two double bedroom terraced house (1,302 Sq.Ft) with private garden boasting decked terrace and summerhouse, superbly situated in the popular Streatham Vale area, within easy reach of excellent transport links and amenities. The property offers bright and spacious accommodation with modern interiors throughout - ideal for modern family life. Features include an inviting front aspect reception room, newly fitted kitchen, rear conservatory/dining area, ground floor shower room, first floor bathroom off bedroom, bonus loft space/study/playroom, gas central heating, double glazing, ample inbuilt storage, and no chain.

Key Features

- PLEASE QUOTE MR0560
- Well Presented Two Bedroom Terraced House (1.302 Sq.Ft)
- Popular Streatham Vale Location
- Inviting Reception Room
- Newly Fitted Kitchen
- Two Bath/Shower Rooms
- Garden with Summerhouse
- Bonus Loft Space/Study/Playroom
- No Chain
- Close to Transport Links, Schools and Amenities



Although every attempt has been made to ensure accuracy, all measurements are approximate.
This floorplan is for illustrative purposes only and not to scale.
Measured in accordance with RICS Standards © Outline.