



ALEX BRITEZ CABRAL

exp[®] UK

@ alex.cabral@exp.uk.com

alexbritezcabral.exp.uk.com

07774 123 444

Deventer Crescent, London, SE22

Guide Price £600,000 - £625,000

3 1

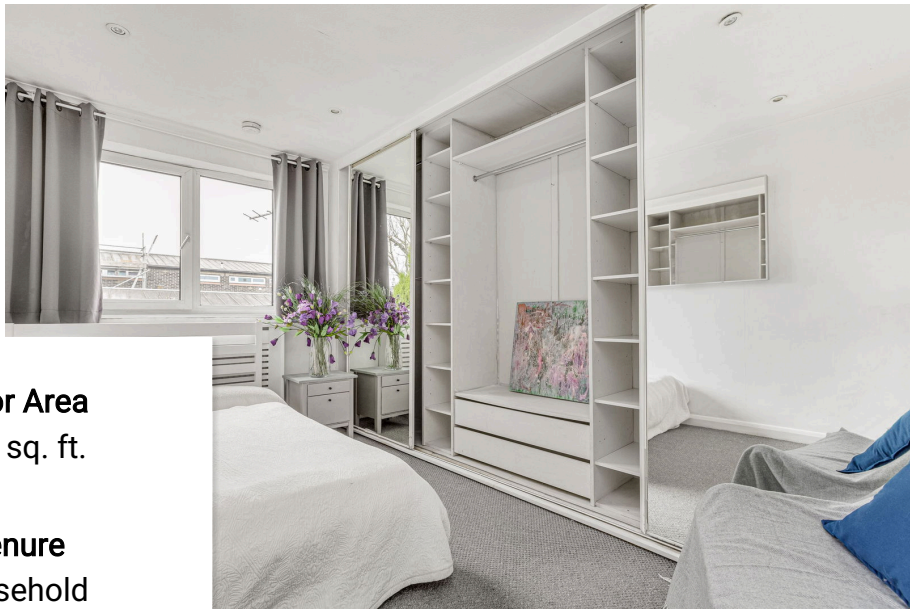


QUOTE AB0697

Guide Price - £600,000 - £625,000

A well appointed three bedroom end of terrace family home situated between North and East Dulwich, and just moments from Dulwich Village. This 828 Sq Ft this property offers is an excellent blank canvas for someone to create an ideal family living space and comprises three bedrooms, a generous living and dining space, and a large rear patio garden. Deventer Crescent is perfectly situated for the local amenities of both Lordship Lane & Dulwich Village, and is also the catchment area for excellent state primary and secondary top independent schools. The green open spaces of Dulwich Park & Green Dale Fields are also within easy reach.



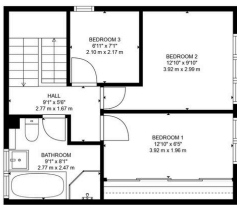


Floor Area
828 sq. ft.

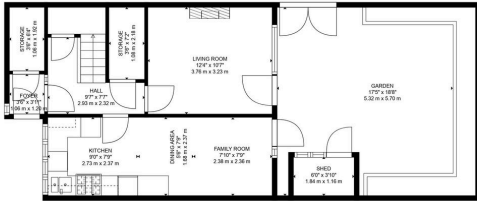
Tenure
Leasehold

Service Charge
£700 per annum

Ground Rent
£10 per annum



FLOOR 2



FLOOR 1

TOTAL: 828 sq. ft, 77 m²
FLOOR 1: 410 sq. ft, 38 m², FLOOR 2: 418 sq. ft, 39 m²
EXCLUDED AREAS: STORAGE: 47 sq. ft, 4 m², SHED: 23 sq. ft, 2 m², GARDEN: 338 sq. ft, 31 m²
FLOOR PLAN CREATED BY CUBICAGA APP. MEASUREMENTS DEEMED HIGHLY RELIABLE BUT NOT GUARANTEED.

