

84 Holmesdale Road,

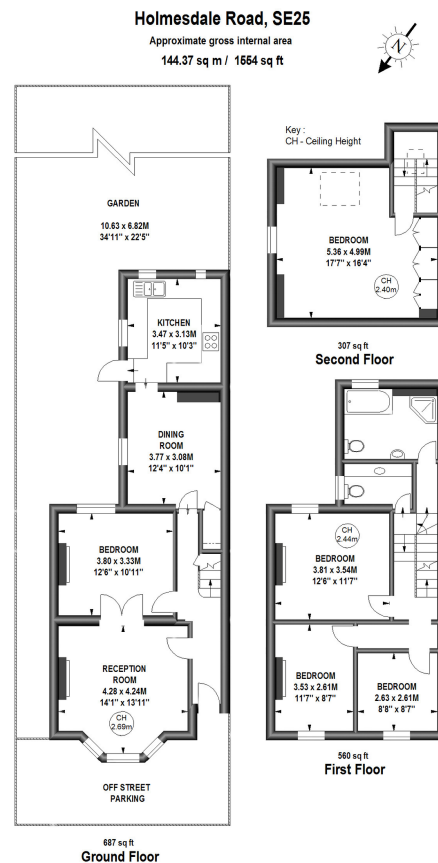
Guide Price £575,000

4 2 2

**Quote AB0697 - ATTENTION INVESTORS / LANDLORDS / DEVELOPERS****Currently Let on an AST - Full Details Available on Request.**

An incredibly spacious four bedroom semi detached house situated on a prime residential street in Thornton Heath. The property boasts nearly 1600 Sq Ft of interior space, offers a private South East facing rear garden with side access, and benefits from off street parking. This property presents as the ideal opportunity to create the perfect family home by adding a side return (STPP), or for investors / developers, the opportunity to create multiple units; again STPP. Holmesdale Road is ideally situated for direct access into Central Croydon, Thornton Heath, and Crystal Palace. Norwood Junction and Selhurst Station are both easily accessible within approximately 0.5 miles

- Quote AB0697
- ATTENTION INVESTORS & DEVELOPERS
- POTENTIAL TO EXTEND OR CONVERT TO FLATS (STPP)
- In Need of Updating Throughtout
- Four Bedrooms
- 1554 Sq Ft
- South East Facing Private Garden - With Side Access
- Off Street Parking
- Close to Central Croydon
- Norwood Junction (Overground) Located Within 0.7 Miles



This floor plan is a representation for guidance purposes only, not for valuation.
Any figure is approximate and must not be relied on as a statement of fact.
Copyright of Wyatt Dixon Homes

