

## Chipperfield Road, Kings Langley, WD4 9JB

Guide Price £375,000

🛏 2 🚿 1 🛋 1

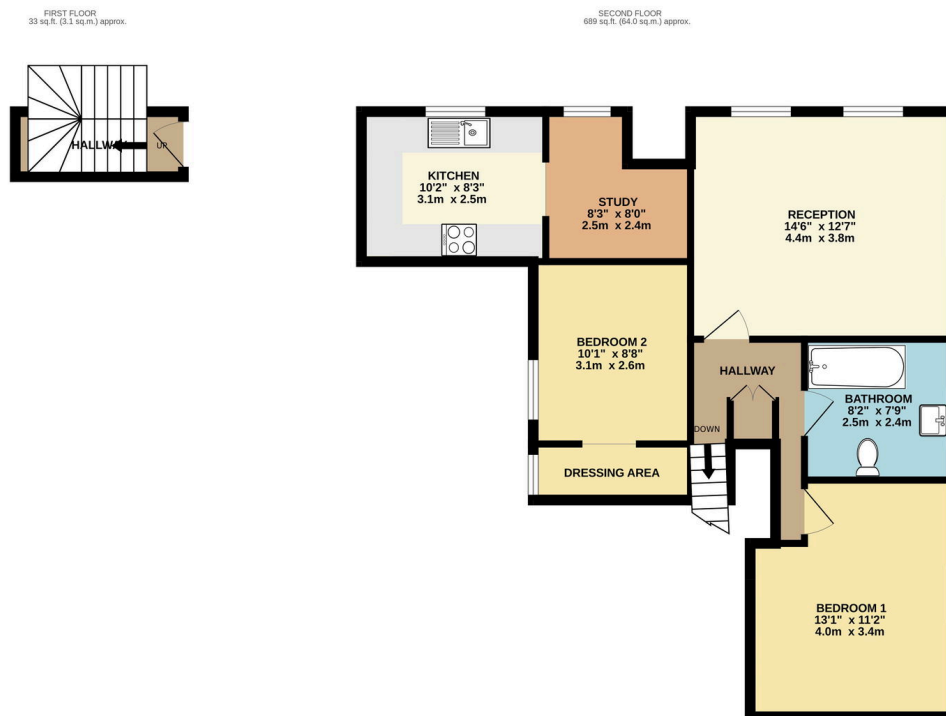


Ref: MS0129

Driving off the entrance driveway from Chipperfield Road, you are greeted by the automatic black gates which open onto the gravel courtyard and car park of Friarswood. Constructed in 2022 from the Art Block of Rudolf Steiner School, this private gated development of only 8 flats offers you peace, luxury and truly living in nature.

This Two double bedroom top floor modern apartment overlooks the communal private gardens in this magnificent development and has come to market chain free. With only a short walk to Kings Langley cricket fields and woodlands and less than a 10 minute walk to Kings Langley High Street this development is conveniently located for great schools, road links to M25, M1 and A41.

- 2 Double Bedrooms
- Modern Bathroom
- 2 Allocated Parking Spaces
- Chain Free
- Landscaped Communal Gardens with Private Shed
- Modern Fitted Kitchen
- Good Storage
- Gated Development
- Low Service Charges
- Village Location



TOTAL FLOOR AREA: 722 sq.ft. (67.1 sq.m.) approx.

Whilst every attempt has been made to ensure the accuracy of the floorplan contained herein, measurements of doors, windows, rooms and any other items are approximate and no responsibility is taken for any error, omission or mis-statement. This plan is for illustrative purposes only and should be used as such by any prospective purchaser. The services, systems and appliances shown have not been tested and no guarantee as to their operability or efficiency can be given.

Made with Metrepro 6/2024