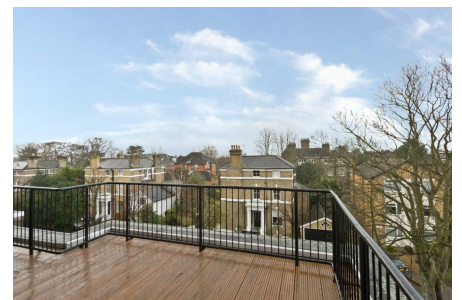
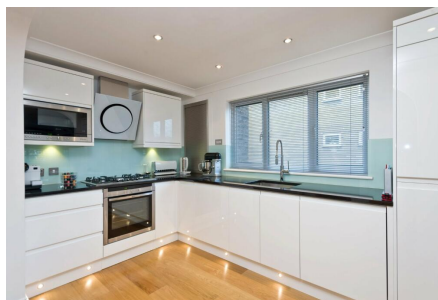
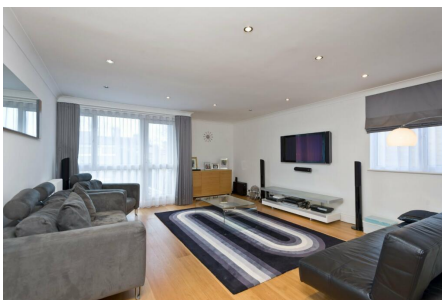


Lansdowne Road, Wimbledon, SW20

£1,175,000

3 3 1



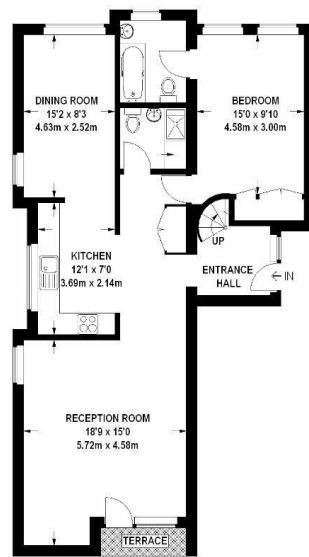
Stunning three double bedroom, three bathroom, modern duplex penthouse apartment (1,453 Sq.Ft) boasting large private roof terrace and secure parking, ideally situated close to the heart of Wimbledon, excellent transport links and amenities. Beautifully maintained, the property offers bright and spacious accommodation over two floors (third and fourth), stylishly appointed with contemporary design and neutral finish throughout. Flowing living space creates the perfect blend of luxury and convenience in this fantastic prime residential location. Features include two reception areas, well equipped kitchen, modern shower room, two en-suite bathrooms, bonus upper level study area, gas central heating, double glazing, quality floor coverings and secure entry.

Key Features

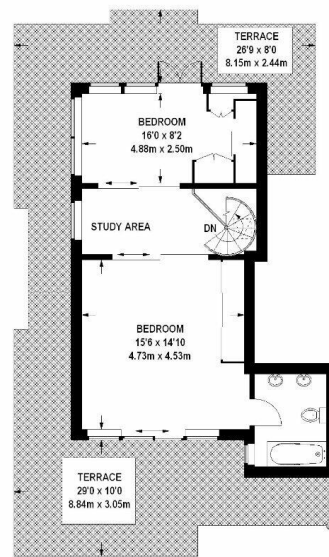
- Stunning Three Bedroom Duplex Penthouse Apartment (1,453 Sq.Ft)
- Two Beautiful Reception Rooms
- Three Bath/Shower Rooms (Two En-Suite)
- Secure Parking
- Close to Excellent Transport Links and Amenities
- Stylish Interiors and Contemporary Finish
- Well Equipped Kitchen
- Large Top Floor Roof Terrace
- Long Lease and no Chain
- Property Ref: DA0587

Lansdowne Road

Approximate Gross Internal Area
135 sq m / 1453 sq ft



Third Floor



Fourth Floor

Viewmedia © 2014
viewmedia.co.uk

Whilst every attempt has been made to ensure the accuracy of this floor plan, measurements of doors, windows and rooms are approximate and no responsibility is taken for any error or omission. This illustration is for identification purposes only. Measured and drawn in accordance with RICS guidelines. Not drawn to scale, unless stated. Dimensions shown are to the nearest 2" and are to the points indicated by the arrow heads.