

Streatham Road, London, SW16 6PB

Guide Price £650,000

🛏 4 🚿 1 🚿 1



Please Quote CD0819 For All Enquiries

A beautifully presented four-bedroom family home with a south-facing garden and summer house, offering excellent living space throughout. Guide Price £650,000 - £700,000

Key Features

- Guide Price £650,000 - £700,000
- Free Hold House
- Four Bedrooms
- Double Reception
- South Facing Garden
- Loft Room
- Modern Fitted Kitchen
- Separate WC
- Summer House In Garden
- Please Quote CD0819 For All Enquiries

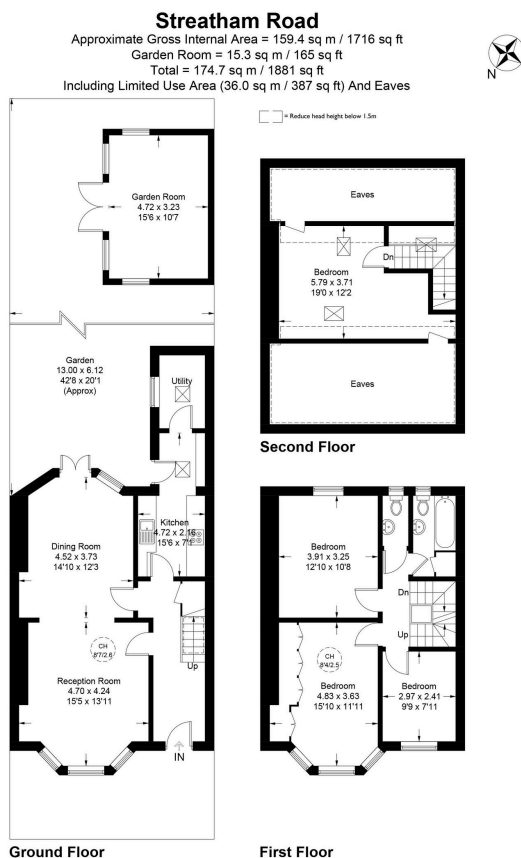


Illustration for identification purposes only, not for valuation purposes.
 measurements are approximate, not to scale.