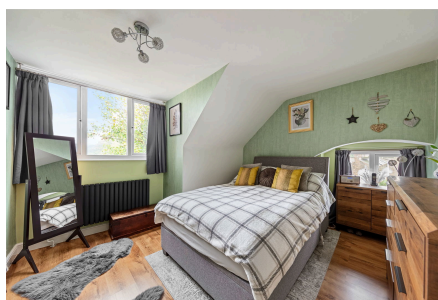


Church Road, SE19

Offers Over £325,000

1 1 1



*****PLEASE QUOTE LT0751 FOR ALL ENQUIRIES*****

Modern Split-Level 1-Bedroom Flat for Sale – Crystal Palace Triangle with Stunning South London Views

576 sq ft | Share of Freehold | Prime Location

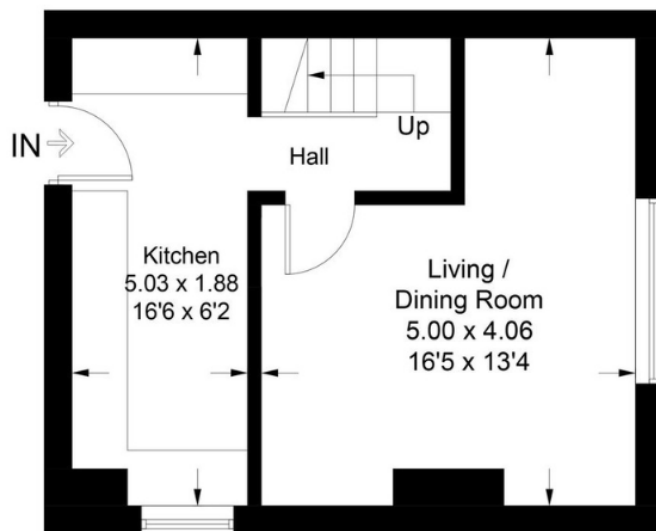
This split-level 1-bedroom flat offers 576 sq ft of stylish living space with breathtaking panoramic views over South London. Located in the heart of the Crystal Palace Triangle, one of South London's most desirable locations, this flat is ideal for first-time buyers, professionals, or investors.

Key Features

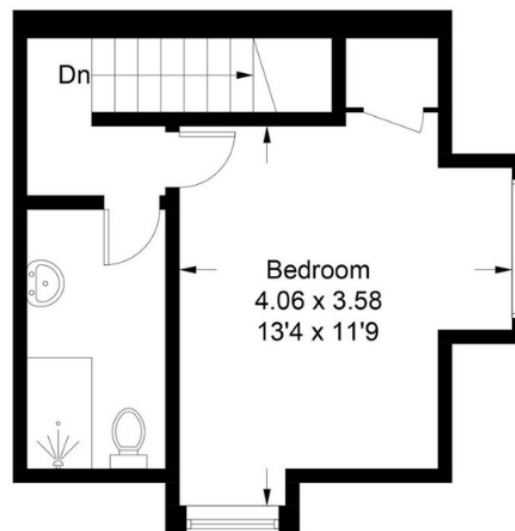
- 576sqft
- Close to Crystal Palace and Gipsy Hill train stations
- Generous double bedroom
- Bright and airy living area with large windows
- Situated in the Crystal Palace Triangle, offering easy access to trendy cafes, restaurants, and shops
- Split-level layout with spacious, light-filled interiors
- Stunning views across South London skyline
- Modern kitchen and bathroom, in excellent condition
- Share of Freehold, providing long-term ownership security
- PLEASE QUOTE LT0751 FOR ALL ENQUIRIES

Church Road, SE19

Approximate Gross Internal Area = 53.5 sq m / 576 sq ft



First Floor



Second Floor

Illustration for identification purposes only, measurements are approximate, not to scale. Fourlabs.co © (ID1137823)