



ALEX BRITEZ CABRAL

exp[®] UK

@ alex.cabral@exp.uk.com

alexbritezcabral.exp.uk.com

07774 123 444

Boniface Walk, Harrow, HA3

Guide Price £450,000

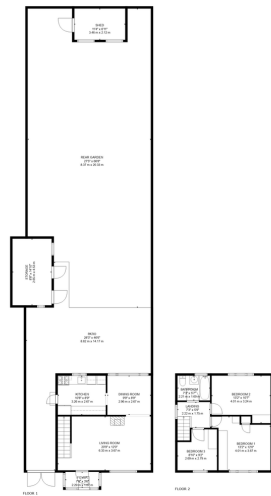
🛏️ 3 🚿 1 🚻 1



- Quote AB0697
- 908 Sq Ft
- In Need of Modernisation
- BISF Construction
- Close to Headstone Lane Station (Overground) and Harrow & Wealdstone Station (Bakerloo Line)
- Three Bedrooms
- Chain Free
- Potential to Extend (STPP)
- Large South Facing Rear Garden with Patio
- Situated within Grimsdyke School Catchment Area



QUOTE AB0697 - A spacious semi detached three bedroom house situated on a popular residential road within the Hatch End area of Harrow Weald. Offering over 900 Sq Ft of interior space alone, the property comes to market for the first time in decades and offers an excellent opportunity for the next owners / family to create the perfect living space. In addition to the generous living space, the property also boasts a significant south facing garden. Hatch End Station (Overground) is close by and offers direct links into London.



TOTAL: 908 sq. ft, 84 m²
 FLOOR 1: 468 sq. ft, 43 m²; FLOOR 2: 440 sq. ft, 41 m²
 EXCLUDED AREAS: STORAGE: 130 sq. ft, 12 m²; SHED: 79 sq. ft, 7 m²; PATIO: 592 sq. ft, 55 m²;
 REAR GARDEN: 1513 sq. ft, 120 m²
 FLOOR PLAN CREATED BY CURBCASA ARL. MEASUREMENTS DEEMED HIGHLY RELIABLE BUT NOT GUARANTEED.

