

## Stanthorpe Road, Streatham, SW16

£350,000

2 1 1



PLEASE QUOTE MR0560 - Superbly located in the heart of Streatham, this well presented one bedroom lower ground floor period conversion flat (587 Sq.Ft) offering bright and spacious accommodation with modern interiors and neutral decor throughout. Situated just a short walk from Streatham station and close to a vibrant array of shops, cafes and amenities, this fantastic property provides the perfect base - ideal for homeowner or investor alike. Features include a large open plan reception/kitchen, modern bathroom with white suite, gas central heating, double glazing, parking on a 'first come, first served' basis and no onward chain.

## Key Features

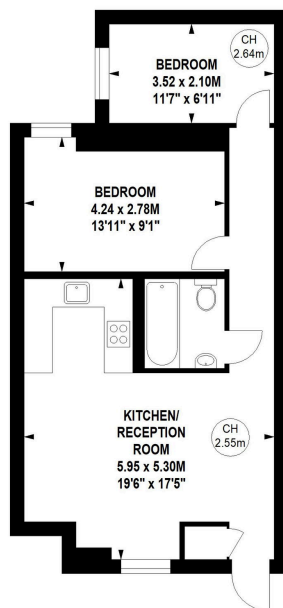
- Well Presented Two Bedroom Lower Ground Floor Flat (587 Sq.Ft)
- Modern Interiors and Neutral Finish
- Bathroom with White Suite
- Parking on 'First Come, First Served' Basis
- Close to Streatham Stations and Vibrant Amenities
- Fantastic Central Location
- Bright and Spacious Open Plan Reception/Kitchen
- Gas Central Heating and Double Glazing
- No Chain
- PLEASE QUOTE MR0560

### Stanthorpe Road, SW16

Approximate gross internal area  
54.53 sq m / 587 sq ft



Key :  
CH - Ceiling Height



Lower Ground Floor

Although every attempt has been made to ensure accuracy, all measurements are approximate.  
This floorplan is for illustrative purposes only and not to scale.  
Measured in accordance with RICS standards.