



Fielding Road, Brook Green, London, W14

£500,000

2 1

A delightful two-bedroom flat situated on the second floor of a well-maintained building on Fielding Road in the heart of Brook Green. This wonderful residence offers a perfect blend of modern living and classic charm, making it an ideal home for professionals, couples, or small families.

The bright living room is filled with natural light, creating a warm and inviting atmosphere. A standout feature of the living room is the elegant feature fireplace, adding a touch of character to the space. Off the living room, you have a modern bright kitchen.

Brook Green is a highly sought-after area known for its leafy streets, vibrant community, and excellent amenities. You'll find a variety of local shops, cafes, and restaurants within walking distance, offering a diverse range of dining and shopping options. The area is also home to several parks and green spaces, perfect for outdoor activities and leisurely strolls.

Floor Area

521 sq. ft.

Tenure

Share Of Freehold

Service Charge

£1200 per annum

Ground Rent

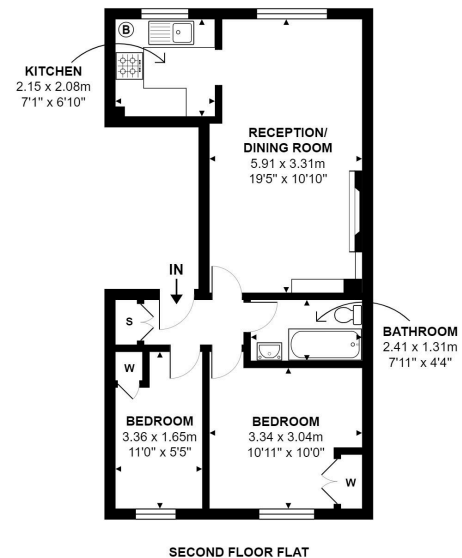
£0 per annum

- QUOTE REF AR0255
- Two bedroom second floor flat
- Spacious bedrooms with built-in wardrobes
- Close to Westfield Shopping Centre
- Chain-free | Share of freehold
- Bright lounge with a feature fireplace
- Leafy streets, local shops, cafes, and restaurants
- Near Kensington Olympia, Shepherds Bush and Hammersmith stations



Fielding Road, London, W14

APPROX. GROSS INTERNAL AREA: 48.4 m² ... 521 ft²



All attempts have been made to ensure the accuracy of this floor plan. All measurements of doors, windows, opening directions, room measurements are approximate and no responsibility is taken for any error, omission or misstatement. This plan is for display purposes only and not to scale. The total floor area is not a guarantee, should be used as an approximation and not be used on the basis of valuation.

Energy Efficiency Rating		Current	Potential
<i>Very energy efficient - lower running costs</i>			
(92 plus) A			
(81-91) B			
(69-80) C		73	79
(55-68) D			
(39-54) E			
(21-38) F			
(1-20) G			
<i>Not energy efficient - higher running costs</i>			
England & Wales	EU Directive 2002/91/EC		