

Mays Hill Road, Bromley, BR2

Guide Price £375,000

🛏 2 🍷 1 🚗 1



Please Quote Ref TH0310 For All Enquiries - GUIDE PRICE £375,000 - Well presented two double bedroom split level purpose built flat (676 Sq.Ft) with private garage and access to well maintained communal gardens, ideally situated close to Bromley South station and town centre amenities. The property, offered to the market with long lease and no onward chain, provides bright and spacious accommodation, arranged over two floors, with modern interiors throughout - ideal for homeowner or investor alike. Features include an inviting reception room, well equipped kitchen, upstairs bathroom, gas central heating, and quality floor coverings.

Key Features

- Please Quote Ref TH0310 For All Enquiries
- Popular Purpose Built Development
- Bright and Airy Reception Room
- Upstairs Bathroom
- Long Lease and No Chain
- Well Presented Two Bedroom Split Level Flat (676 Sq.Ft)
- Spacious Accommodation Over Two Floors
- Separate Well Equipped Kitchen
- Garage and Attractive Communal Gardens
- Close to Bromley South Station, Schools and Amenities

Firtree Court

Approximate Gross Internal Area = 62.8 sq m / 676 sq ft
 Garage = 12.1 sq m / 130 sq ft
 Total = 74.9 sq m / 806 sq ft

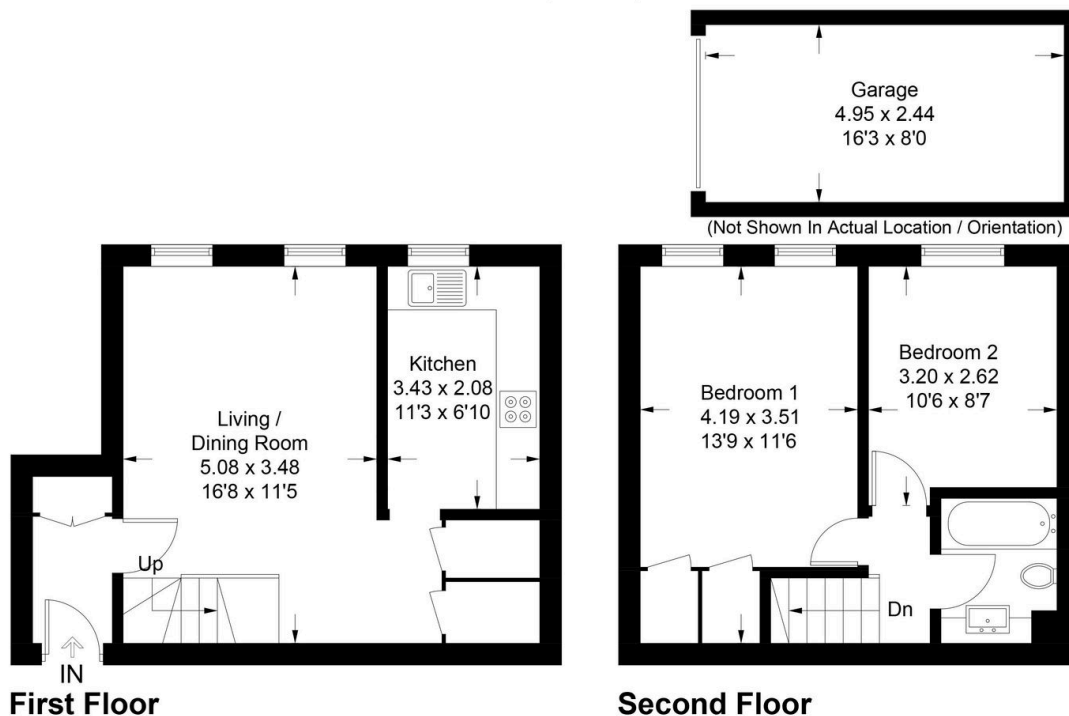


Illustration for identification purposes only, measurements are approximate, not to scale. Fourlabs.co © (ID1131732)