



## Ashmore Road, Woolwich, London SE18 4BY

Offers Over £475,000

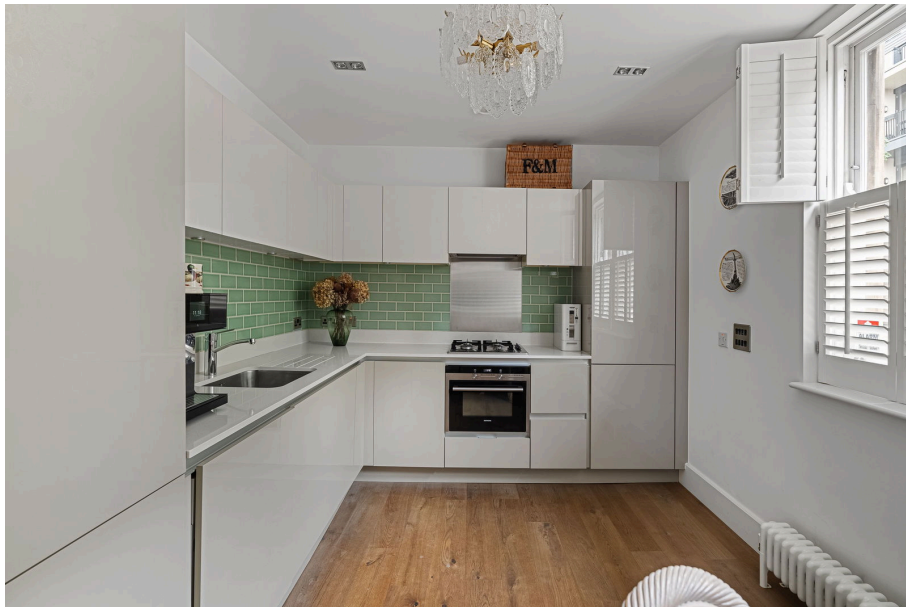
🛏️ 2 🚿 1 🚗 1

- Grade II listed Period Property
- Private Landscaped Rear Garden
- Modern Kitchen with Integrated Appliances
- Allocated Parking
- Concierge Services
- Two Double Bedrooms
- Chic Interior Styling
- Gated Development
- Gym Facilities
- Close to transport



The Royal Military Academy is a prestigious Grade II listed development, renowned for its remarkable architecture and picturesque grounds. It is home to the oldest cricket ground in the UK, where Blackheath Cricket Club resides. The featured property, a stunning two-bedroom end-of-terrace Grade II listed house, dates back to the early development of the Royal Military Academy (1803-1858). It showcases chic interior styling that harmonises beautifully with the property's original period architecture, offering a perfect blend of historic character and sophisticated charm.

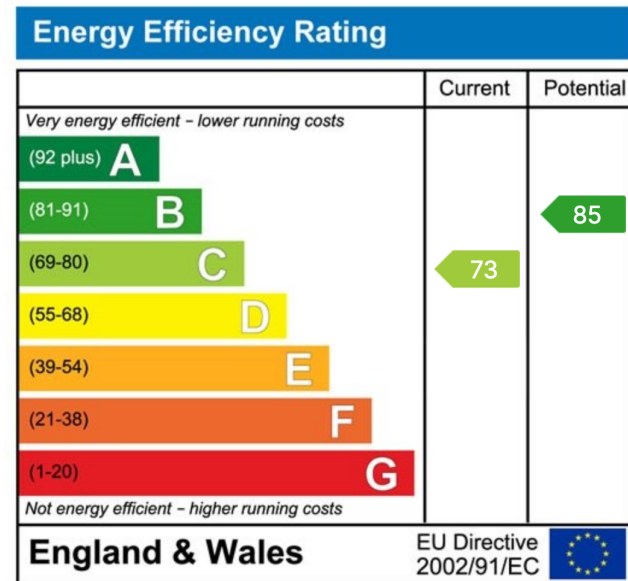




Ashmore Road, Woolwich, SE18 4BY

Total Area: 82.0 m<sup>2</sup> ... 883 ft<sup>2</sup>

All measurements are approximate and for display purposes only



eXp World UK Ltd is a registered company at Level 37, 25 Canada Square, London, E14 5LQ.

Registered company number is 12016573. VAT Registration Number is 327 4120 29