

South Norwood Hill, South Norwood, SE25

£275,000

2 1 1



Please Quote Ref TH0310 For All Enquiries - Beautifully presented and newly refurbished two bedroom top floor period conversion flat (545 Sq. Ft) with off street parking, superbly located within a short walk of Norwood Junction station and local amenities. Offering bright and spacious accommodation with modern interiors and neutral finish throughout, the property represents an ideal first time or investment purchase in this very convenient residential location. Features include a wonderful open plan reception/kitchen, stylish bathroom with white suite, gas central heating, double glazing, and no onward chain.

Key Features

- Please Quote Ref TH0310 For All Enquiries
- Ideal First Time or Investment Purchase
- Bathroom with Modern Suite
- No Chain
- Close to Norwood Junction Station
- Newly Refurbished Two Bedroom Top Floor Period Conversion (545 Sq.Ft)
- Bright and Spacious Open Plan Reception/Kitchen
- Off Street Parking
- Circa £1,500pa Service Charge and £100pa Ground Rent
- Easy Access Croydon and Crystal Palace

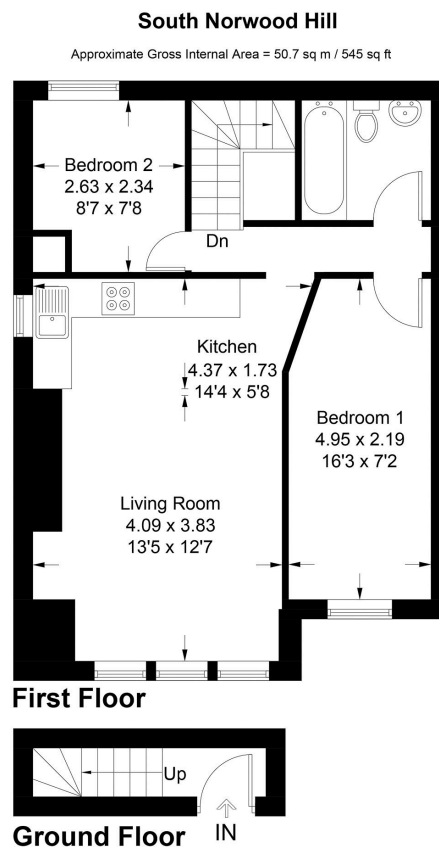


Illustration for identification purposes only, measurements are approximate, not to scale. Fourlabs.co © (ID1129178)