

23 High Road, Bushey Heath

£420,000

🛏 2 🚿 2 🛋 1



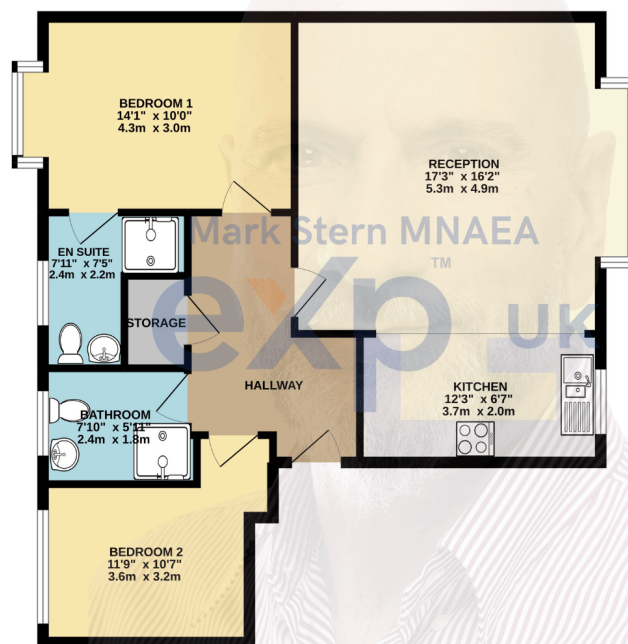
Ref: MS0129

Located in the Heart of Bushey Heath at the junction of Windmill Lane , this first floor luxury apartment has been renovated to the highest standard which offers a new owner luxurious living. Situated in a private gated development, being only one of three apartments in the block, benefits include covered allocated parking, double bedrooms, Two bathrooms and with 141 years remaining on the lease, this property would be ideal for first time buyers and downsizers alike.

Please call me direct on 01923 549 065 to arrange an early viewing.

- 2 Double Bedrooms
- 2 Bathrooms
- Lease of 141 Years Remaining
- Under Cover Allocated Parking
- Prime Bushey Heath Location
- Newly Refurbished Throughout
- Large Bay Windows
- Only 3 Flats In Block
- Gated Private Development
- Chain Free

FIRST FLOOR
767 sq.ft. (71.2 sq.m.) approx.



TOTAL FLOOR AREA: 767 sq.ft. (71.2 sq.m.) approx.
Whilst every attempt has been made to ensure the accuracy of the floorplan contained here, measurements of doors, windows, rooms and any other items are approximate and no responsibility is taken for any errors, omissions or mis-statements. This plan is for illustrative purposes only and should be used as such by any prospective purchaser. The services, systems and appliances shown have not been tested and no guarantee is made.