



Your Logo

Barlby Road, London, W10

Guide Price £1,650,000

5 2 2



## Please Quote JD0696

Rare Edwardian Gem in the Royal Borough of Kensington and Chelsea

We are thrilled to market, for the first time in 31 years, this exquisite Edwardian family home in the prestigious Royal Borough of Kensington and Chelsea. Offering a generous 1,960 square feet of living space, this character-filled property seamlessly blends period charm with exceptional living space and great location.

Accommodation: Ground Floor:

Two welcoming reception rooms, perfect for family life and entertaining  
Spacious eat-in kitchen, a culinary enthusiast's delight  
Convenient cloakroom WC  
Practical utility room  
Light-filled conservatory opening onto the garden

First Floor:

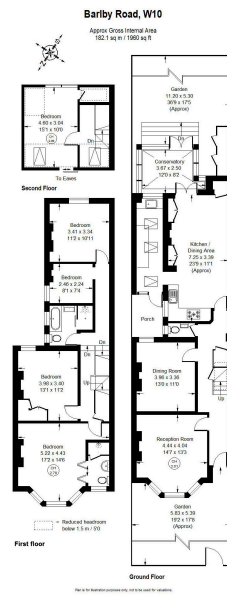
Three substantial double bedrooms, one boasting en-suite shower facilities  
Additional single bedroom, ideal for a nursery or home office  
Well-appointed family bathroom

Second Floor:

Further double bedroom, offering flexible living arrangements  
External: The property enjoys a good-sized, southerly-facing rear garden—a veritable suntrap perfect for outdoor enjoyment and al fresco dining. Backing onto the West London Bowling Club, the garden provides an open aspect, enhancing the home's sense of space and light.

Location: Nestled on Barlby Road in North Kensington, within the esteemed Royal Borough of Kensington and Chelsea, this property enjoys a prime location. It's within easy walking distance of the iconic Portobello Road and trendy Golborne Road, offering an array of shops, cafes, and restaurants. This location is perfect for the





- Terraced House
- Five Bedrooms
- Conservatory
- 1960 Square Feet
- Quote JD0696
- Freehold
- Two Receptions
- Southerly Facing Garden
- Kensington and Chelsea Borough

