

Crescent Lane, Clapham, SW4

Guide Price £900,000 - £975,000

🛏️ 2 🚿 2 🚗 1



PLEASE QUOTE JW0326 - GUIDE PRICE £900K - £975K - Stunning ultra-modern two double bedroom, two bathroom, freehold property (1,098 Sq.Ft) superbly situated in a fantastic Abbeville Village (Clapham) location, moments from vibrant shops and eateries, as well as wonderful Clapham Common. The property offers bright and spacious accommodation, superbly appointed with stylish interiors, modern design and high quality finish throughout. Flowing living space creates the perfect hub for a modern lifestyle, with an impressive open plan reception/kitchen/diner with vaulted ceiling and external terrace providing a fantastic entertaining space. Features include two en-suite bath/shower rooms, ample bespoke inbuilt storage, quality floor coverings, gas central heating, double glazing, external terrace and further lower level patio.


Key Features

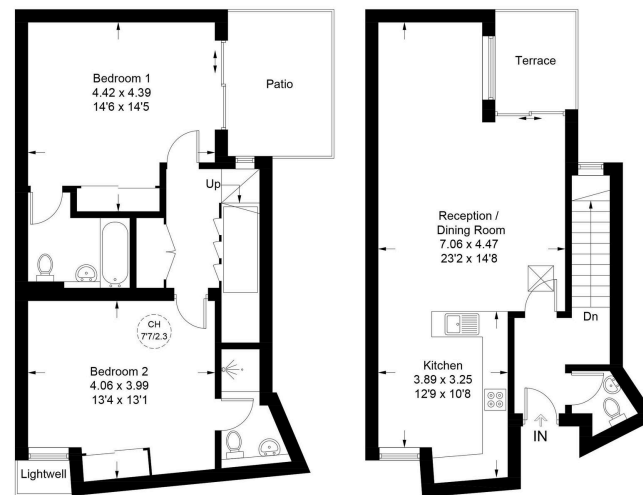
- STUNNING 2 BED ULTRA-MODERN FREEHOLD PROPERTY (1,098 SQ.FT) FREEHOLD. MODERN HOUSE
- STYLISH INTERIORS AND HIGH QUALITY FINISH
- PRIVATE TERRACE AND FURTHER PATIO
- SOUGHT AFTER ABBEVILLE VILLAGE (CLAPHAM COMMON) LOCATION
- BRIGHT AND SPACIOUS OPEN PLAN RECEPTION/KITCHEN/DINER. HIGH CEILINGS
- 2 EN-SUITE BATH/SHOWER ROOMS
- LOTS OF INBUILT STORAGE. BIKE STORAGE
- CLOSE TO EXCELLENT TRANSPORT LINKS
- EASY ACCESS SHOPS, EATERIES AND CLAPHAM COMMON
- PLEASE QUOTE JW0326

Crescent Lane

Approximate Gross Internal Area = 101.0 sq m / 1087 sq ft



 = Reduced headroom below 1.5m / 5'0"



Lower Ground Floor

Ground Floor

Illustration for identification purposes only, not for valuation purposes.
 measurements are approximate, not to scale.