

## 1, 16 Fielding Lane,

Guide Price £350,000

1 1 1

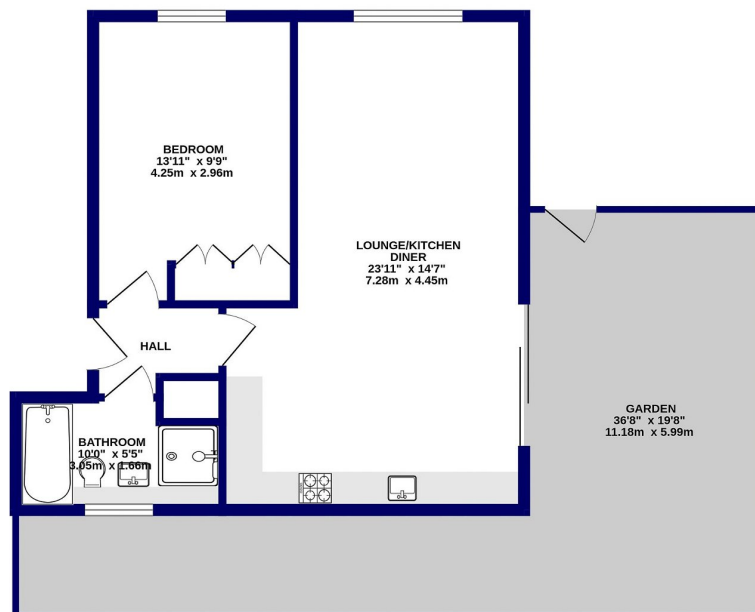


Please Quote Ref TH0310 For All Enquiries – Presenting a stunning garden flat with modern open-plan layout, sleek kitchen, spacious double bedroom with built-in wardrobes, and fully tiled bathroom with walk-in shower. Underfloor heating ensures year-round comfort. Private garden and allocated parking. Built in 2020, with share of freehold and 10-year warranty. Conveniently located near Bromley town center and transport links.

## Key Features

- Private Landscaped Garden
- Share of Freehold
- 549 Square Foot
- 0.8 miles from Bickley Station
- 6 Years Remaining on New Build Warranty
- Underfloor Heating Throughout
- Allocated Parking Space
- 0.6 miles from Bromley South Station
- Built in 2020
- Please Quote Ref TH0310 For All Enquiries

GROUND FLOOR  
549 sq.ft. (51.0 sq.m.) approx.



TOTAL FLOOR AREA: 549 sq.ft. (51.0 sq.m.) approx.

Whilst every attempt has been made to ensure the accuracy of the floorplan contained here, measurements of doors, windows, rooms and any other items are approximate and no responsibility is taken for any error, omission or mis-statement. This plan is for illustrative purposes only and should be used as such by any prospective purchaser. The services, systems and appliances shown have not been tested and no guarantee as to their operability or efficiency can be given.