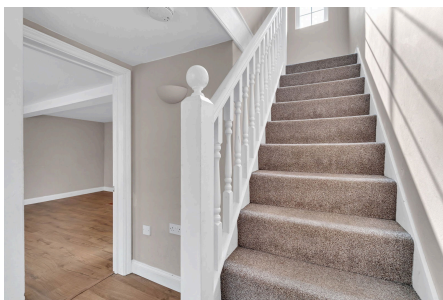


## 4 Mount Street

Offers Over £225,000

🛏️ 2 🚿 1 🚗 1

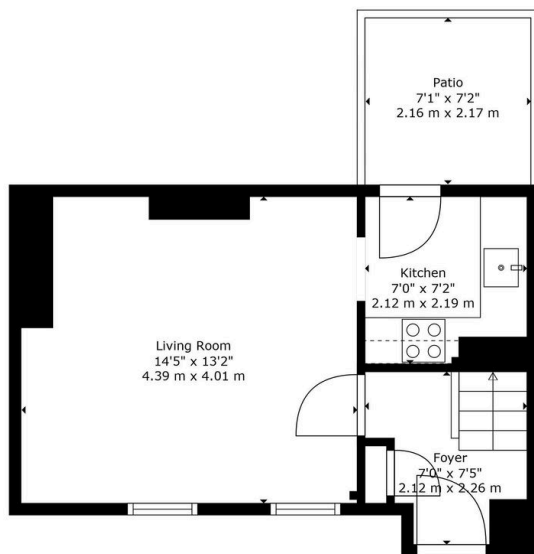


**\*PLEASE QUOTE LT0751 FOR ALL ENQUIRIES\***

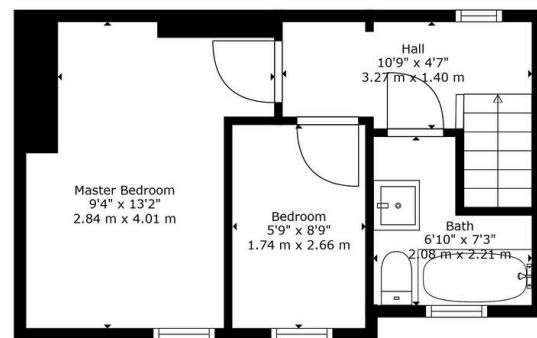
Fantastic two bedroom Victorian terraced property within easy reach of Aylesbury town centre and train station. Requiring light modernisation, this bright and airy property benefits from easy access to amenities in central Aylesbury and London via Chiltern Railways direct to Marylebone.

**Key Features**

- 2 Bedroom
- 576sqft
- Period Terraced House
- Courtyard Garden
- 2 Minute walk to Aylesbury Town Centre
- 2 Minute walk to Aylesbury Train Station for access to Marylebone
- Bright & Airy
- Chain Free
- Loft Access
- On Street Permit Parking



Ground Floor



First Floor

**TOTAL: 576 sq. ft, 53 m2**  
 GROUND FLOOR: 296 sq. ft, 27 m2, FIRST FLOOR: 280 sq. ft, 26 m2  
 EXCLUDED AREAS: PATIO: 51 sq. ft, 5 m2

For Illustrative Purposes Only. Confirm Measurements Prior To Making Any Decisions.

