

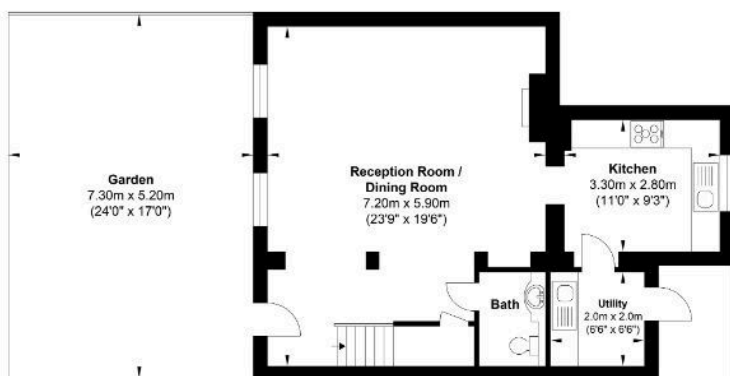
## Langholm Lodge, Richmond, TW10 6UX

Offers Over £1,500,000

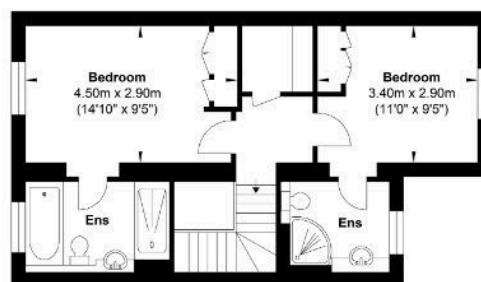
🛏️ 2 🚿 2 🚗 1



- Grade II Listed Georgian House
- Garden
- Two Double Bedrooms
- Cloakroom
- No Onward Chain
- River Thames Views
- Gated Parking
- Two Bathrooms
- Utility Room
- Share Of Freehold



Ground Floor



First Floor



Gross Internal Floor Area : 105.1 m2 ... 1131 ft2

Whilst every attempt has been made to ensure the accuracy of the floor plan contained here, measurements of doors, windows, rooms and any other items are approximate and no responsibility is taken for any error, omission, or mis-statement. This plan is for illustrative purposes only and should be used as such by any prospective purchaser. The services, systems and appliances shown have not been tested and no guarantee as to their operability or efficiency can be given.

Please Quote Ref DG0640. A Stunning Grade II Listed Georgian House with protected views to the River Thames. Located in a Gated Development and offered with No Onward Chain.

Discover Langholm Lodge, a charming and unique two double bedroom, two bathroom Georgian house with secure parking located on Petersham Road. This exceptional home, once the coach house and stables to Buccleuch House built for the Duke of Montagu, is nestled in the tranquil Richmond Conservation Area and offers stunning river views and off-street parking.