



ALEX BRITEZ CABRAL

exp[®] UK

@ alex.cabral@exp.uk.com

🌐 alexbritezcabral.exp.uk.com

☎ 07774 123 444

1 Deventer Crescent

Guide Price £610,000

3 1

QUOTE AB0697 - A well appointed three bedroom end of terrace family home situated between North and East Dulwich, and just moments from Dulwich Village. The 828 Sq Ft this property offers is an excellent blank canvas for someone to create an ideal family living space and comprises three bedrooms, a generous living and dining space, and a large rear patio garden.

Deventer Crescent is perfectly situated for the local amenities of both Lordship Lane & Dulwich Village, while the green open spaces of Dulwich Park & Green Dale Fields are also within easy reach.

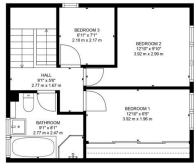


Floor Area: 828 sq. ft.

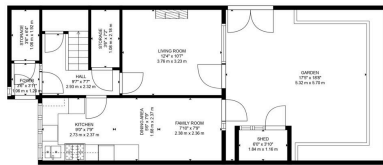
Tenure: Leasehold

Service Charge: £600 per annum

Ground Rent: £10 per annum



FLOOR 2



FLOOR 1

TOTAL: 828 sq. ft., 77 m²
FLOOR 1: 413 sq. ft., 38 m²; FLOOR 2: 415 sq. ft., 39 m²
EXCLUDED AREAS: STORAGE: 47 sq. ft., 4 m²; SHED: 23 sq. ft., 2 m²; GARDEN: 338 sq. ft., 31 m²
FLOOR PLAN CREATED BY CLARISSE APT. MEASUREMENTS USED SHOULD BE TAKEN AS APPROXIMATE.

