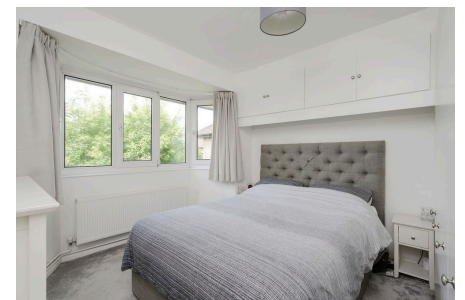


Greville Close, St Margarets, TW1

£625,000

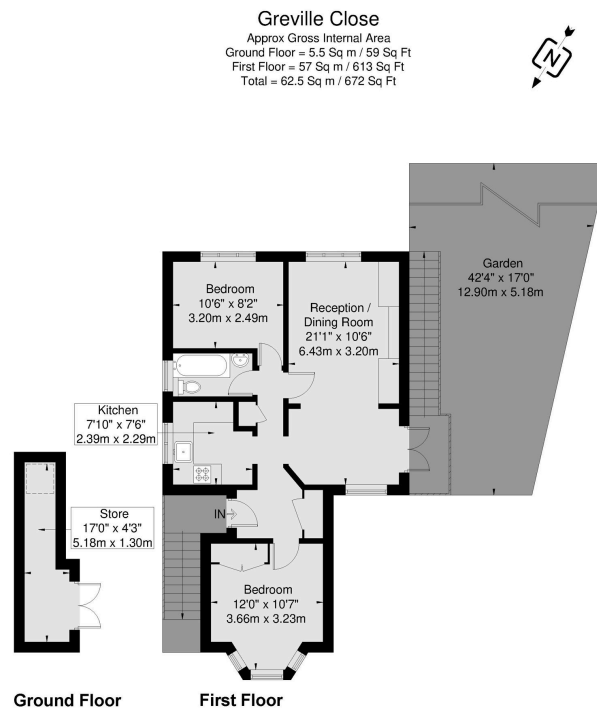
🛏 2 🚿 1 🚗 1



Beautifully presented two bedroom first floor maisonette (672 Sq.Ft) with balcony leading down to a gorgeous landscaped garden, superbly situated in a sought after St Margarets location, close to excellent transport links, schools and amenities. Offering bright and spacious, well planned accommodation with modern interiors and neutral finish throughout. Property Ref: DA0587

Key Features

- Beautiful Two Bedroom First Floor Maisonette (672 Sq.Ft)
- Stylish Interiors and Neutral Finish
- Well Equipped Kitchen
- Generous South Facing Garden
- Long Lease
- Sought After St Margarets Location
- Bright and Spacious Double Length Reception Room
- Modern Bathroom
- Close to Transport Links and Amenities
- Property Ref: DA0587



Viewmedia @ 2024
Viewmedia.co.uk

Whilst every attempt has been made to ensure the accuracy of this floor plan, measurements of doors, windows and rooms are approximate and no responsibility is taken for any error or omission. This illustration is for identification purposes only. Not drawn to scale, unless stated. Dimensions shown are to the nearest 3" and are to the points indicated by the arrow heads.