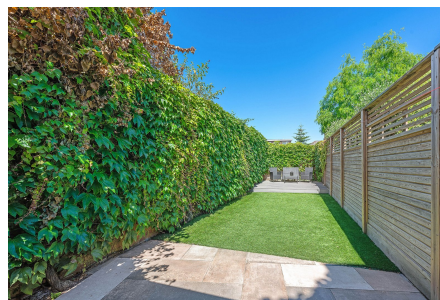


Franch Court Road, Earlsfield, SW17

Guide Price £1,000,000

4 2 2



PLEASE QUOTE JW0326 - Stunning four bedroom, two bathroom, period property (1,406 Sq.Ft) with all-weather surface garden, superbly situated on the borders of Wimbledon and Tooting, and within a short walk of rail and underground connections. The property has been superbly appointed and stylishly finished by the current owner, offering spacious extended accommodation over three floors with a wealth of period appeal and original features. Flowing accommodation creates the perfect haven for family life, with two interconnecting reception areas opening through to a beautiful well equipped kitchen. Features include high ceilings, exposed brickwork, quality floor coverings, gas central heating, double glazing, and neutral decor.

Key Features

- STUNNING 4 BED, 2 BATH VICTORIAN PROPERTY (1,406 SQ.FT)
- CHARACTER APPEAL AND STYLISH INTERIORS
- WELL EQUIPPED EXTENDED KITCHEN
- LOW MAINTENANCE PRIVATE GARDEN
- EASY ACCESS SHOPS, SCHOOLS AND AMENITIES
- SOUGHT AFTER EARLSFIELD LOCATION
- 2 ELEGANT RECEPTION AREAS
- LUXURY FAMILY BATHROOM AND SHOWER ROOM
- CLOSE TO EARLSFIELD, TOOTING BROADWAY AND WIMBLEDON PARK STATIONS
- PLEASE QUOTE JW0326

Franche Court Road

Approximate Gross Internal Area = 130.6 sq m / 1406 sq ft

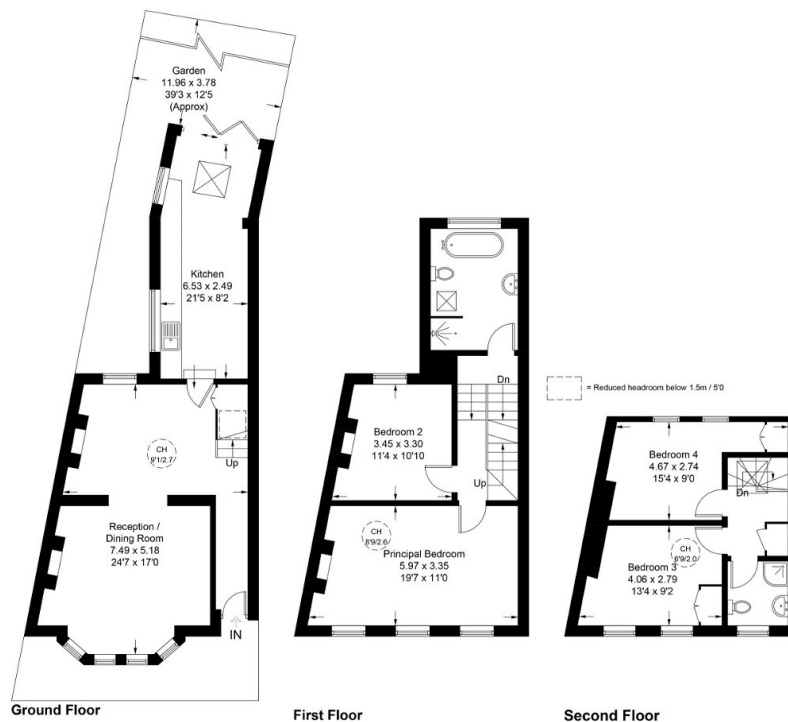


Illustration for identification purposes only, not for valuation purposes. Measurements are approximate, not to scale. Dimensions are approximate.