



JAMES GODDARD

exp[®] UK

@ james.goddard@exp.uk.com

🌐 jamesgoddard.exp.uk.com

📞 0203 146 7080

1 & 2 Furze Wood View Tilburstow Hill Road, South Godstone

Offers In Region Of £1,200,000

🛏️ 4 🚿 3 🛋️ 1

- Reference *JG0621*
- New Build
- Situated on Circa 3/4 of an Acre
- Additional Store Room / Office / Gym Space
- Premium Finishings Throughout
- Four Bedrooms & 3 1/2 Bathrooms
- 10 Year Structural Warranty
- Large Driveway with Ample Parking for 6+ Vehicles
- Picturesque Views in all Directions
- Located Close by to South Godstone & Surrounding Points of Interest



Introducing Furze Wood View a brand new development of two luxury barns consisting of 4 bedrooms, 3 1/2 bathrooms a large open plan kitchen / living space & 3 quarters of an acre of land per plot. Featuring a stylish Italian shaker kitchen, quartz worktops & Bosch integrated appliances, floor to ceiling porcelain tiles throughout each bathroom, underfloor heating, brand new double glazing throughout, an additional large internal store room which can be converted into an office / gym / studio & glorious countryside views in all directions.

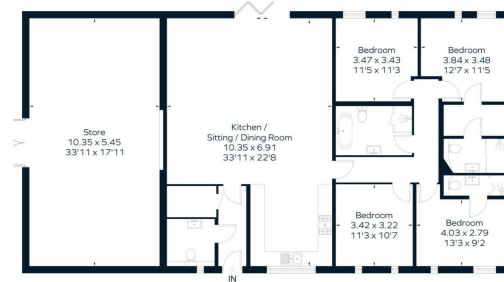
Access via a private road approximately 500 yards from the main road this rural development promises peaceful living. Perfect for those wanting to escape the hustle & bustle of city living, but still wanting easy connections via M25 / A roads or Railway (Godstone 3.5 miles.)





James Goddard
exp UK

Approximate Floor Area = 150.0 sq m / 1614 sq ft
Store = 57.0 sq m / 613 sq ft
Total = 207.0 sq m / 2227 sq ft



Whilst every attempt has been made to ensure the accuracy of this floor plan, measurements of doors, windows and rooms are approximate and no responsibility is taken for any error or omission. This illustration is for identification purposes only. Measured and drawn accordance with RICS guidelines. Not drawn to scale, unless stated. Dimensions shown are to the nearest 2" and are to the points indicated by the arrow heads.

