

Barnwell Road, Brixton, SW2

Guide Price £600,000

🛏 2 🚿 1 🚗 1



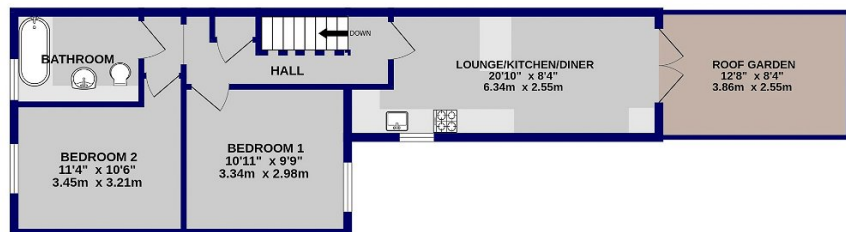
Please Quote Ref TH0310 For All Enquiries - Charming two double bedroom first floor period conversion flat (526 Sq.Ft) with private roof terrace, superbly situated in a quiet residential road close to the fashionable centres of both Brixton and Herne Hill. The property offers well planned accommodation with a wealth of period appeal, superbly appointed with stylish interiors, neutral palette and high quality finish throughout. Features include a beautiful open plan reception/kitchen opening onto the roof terrace, metro-tiled family bathroom, gas central heating, double glazing, and quality floor coverings.

Key Features

- Stunning Two Bedroom First Floor Period Conversion (526 Sq.Ft)
- Stylish Interiors and High Quality Finish
- Delightful Private Roof Terrace
- Moments From Brockwell Park and Lido
- Easy Access Shops, Bars and Restaurants
- Sought After Brixton/Herne Hill Location
- Bright and Spacious Open Plan Reception/Kitchen
- Metro-Tiled Bathroom
- Close to Brixton and Herne Hill Stations
- Please Quote Ref TH0310 For All Enquiries

ENTRANCE FLOOR
23 sq.ft. (2.2 sq.m.) approx.

1ST FLOOR
503 sq.ft. (46.7 sq.m.) approx.



TOTAL FLOOR AREA : 526 sq.ft. (48.8 sq.m.) approx.

Whilst every attempt has been made to ensure the accuracy of the floorplan contained here, measurements of doors, windows, rooms and any other items are approximate and no responsibility is taken for any error, omission or mis-statement. This plan is for illustrative purposes only and should be used as such by any prospective purchaser. The services, systems and appliances shown have not been tested and no guarantee as to their operability or efficiency can be given.