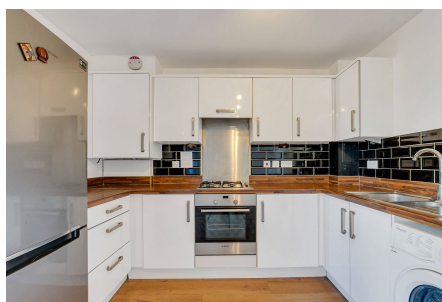


Cairns Avenue, Norbury, SW16

From £220,000

1 1 1



PLEASE QUOTE MR0560 - Being Sold by Online Auction - Starting Bids from: £220,000 - Buy it now option available. Well presented one bedroom ground floor flat in popular modern development on the borders of Norbury and Mitcham, close to transport links and amenities. The property offers bright, well planned accommodation with modern interiors throughout - ideal for homeowner or investor alike in this sought after and convenient location. Features include a light and spacious open plan reception/kitchen, modern bathroom, gas central heating, double glazing and neutral decor.

Key Features

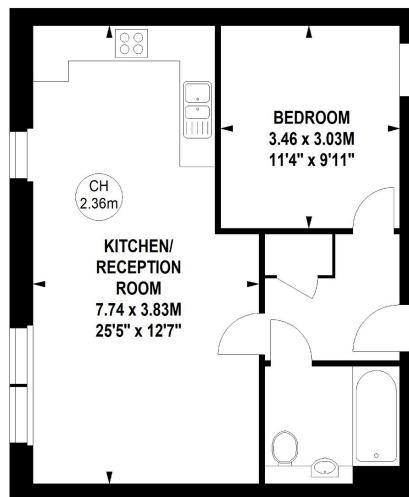
- Being sold through online auction
- Buyer's fee applies
- Well Presented One Bedroom Ground Floor Flat
- Modern Interiors and Neutral Finish
- Easy Access Mitcham, Streatham, Norbury and Croydon
- Buy it now option available
- PLEASE QUOTE MR0560
- Sought After Modern Development
- Close to Mitcham Eastfields Station
- Attractive Surrounding Open Space

Styles House, SW16

Approximate gross internal area
48.86 sq m / 526 sq ft



Key :
CH - Ceiling Height



Ground Floor

Although every attempt has been made to ensure accuracy, all measurements are approximate.
This floorplan is for illustrative purposes only and not to scale.
Measured in accordance with RICS standards.