



CHRISTOPHER WOOD POWERED BY **exp**™ UK

@ christopher.wood@exp.uk.com

christopherwood.exp.uk.com

01494 623 101

Vale Road, Chesham, HP5

£850,000

3 2 1



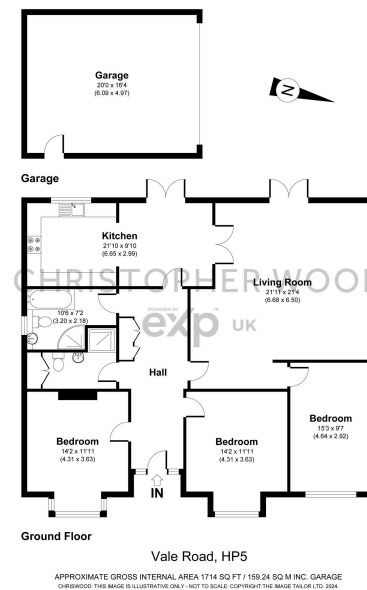
- Detached home
- 3 double bedrooms
- Secluded plot of 0.22 of an acre
- Views to the front of countryside
- approx. 1 mile to Chesham metropolitan line station
- Planning permission ref PL/24/0675/FA
- 2 Bathrooms
- Detached garage with separate parking to rear
- Driveway parking
- Please quote CW0111





A wonderful detached home sitting on a generous plot of circa 0.19 of an acre, overlooking countryside, with a detached garage to the rear and planning permission to convert the loft into habitable space to create a 5 bedroom home.....

Please quote CW0111



20250204_09:01

Energy performance certificate (EPC) - Find an energy certificate - GOV.UK

Energy performance certificate (EPC)			
125 Vale Road CWC 950M HP5 5PP	Energy rating D	Valid until 18 June 2034	Certificate number 9830-3039-0208-1194-0204
Property type Total floor area	Detached bungalow 143 square metres		

Rules on letting this property

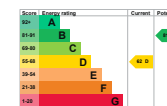
Properties can be let if they have an energy rating from A to E.

You can read [guidance for landlords on the regulations and exemptions](https://www.gov.uk/guidance/landlords-on-the-regulations-and-exemptions) (<https://www.gov.uk/guidance/landlords-on-the-regulations-and-exemptions>).

Energy rating and score

This property's energy rating is D. It has the potential to be B.

[See how to improve this property's energy efficiency.](#)



The graph shows this property's current and potential energy rating.

Properties get a rating from A (best) to G (worst) and a score. The better the rating and score, the lower your energy bills are likely to be.

For properties in England and Wales:
the average energy rating is D
the average energy score is 50

<https://find-energy-certificates.service.gov.uk/energy-certificates/9830-3039-0208-1194-0204?print=true>

1/4