

Swaby Road, Earlsfield, SW18

Guide Price £900,000 - £950,000

3 1 1



PLEASE QUOTE JW0326 - GUIDE PRICE £900K - £950K - Beautifully presented three bedroom end of terrace family home (1,089 Sq.Ft) with attractive landscaped garden with side access and large garden room/home office, superbly situated within just a short walk of Earlsfield station. Offering bright and spacious accommodation over two floors, with stylish interiors and neutral finish throughout, the property provides the perfect space for a growing family, in a fantastic quiet residential location. Features include an inviting reception room, separate well equipped kitchen, upstairs bathroom and ground floor WC, ample inbuilt storage, gas central heating, double glazing, and quality floor coverings.

Key Features

- BEAUTIFUL 3 BED END OF TERRACE HOUSE (1,089 SQ.FT)
- FANTASTIC EARLSFIELD LOCATION, GOOD SCHOOLS
- INVITING RECEPTION ROOM & STYLISH KITCHEN
- ATTRACTIVE GARDEN WITH GARDEN ROOM/HOME OFFICE
- SHORT WALK TO EARLSFIELD STATION AND AMENITIES
- GUIDE PRICE £900K - £950K
- STYLISH INTERIORS AND NEUTRAL FINISH
- UPSTAIRS BATHROOM AND GROUND FLOOR WC
- ON-STREET PARKING
- PLEASE QUOTE JW0326

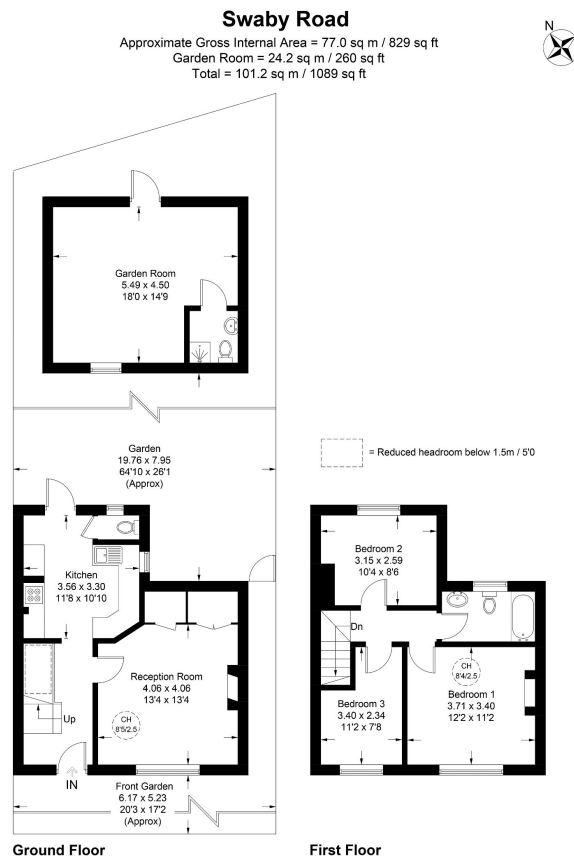


Illustration for identification purposes only, not for valuation purposes, measurements are approximate, not to scale.