

34 MULGRAVE ROAD

SUTTON | GREATER LONDON

34

A STYLISH COLLECTION OF 6 LUXURIOUS 3 BEDROOM DUPLEX APARTMENTS, BUILT TO A HIGH SPECIFICATION



RAOCON IS DELIGHTED TO PRESENT ITS LATEST DEVELOPMENT, 34 MULGRAVE ROAD.

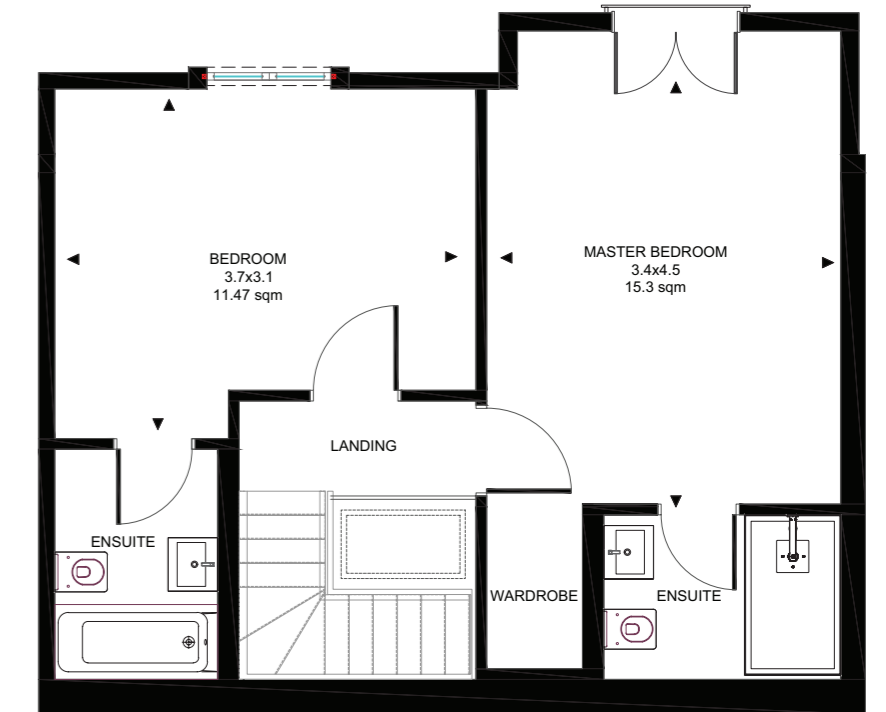
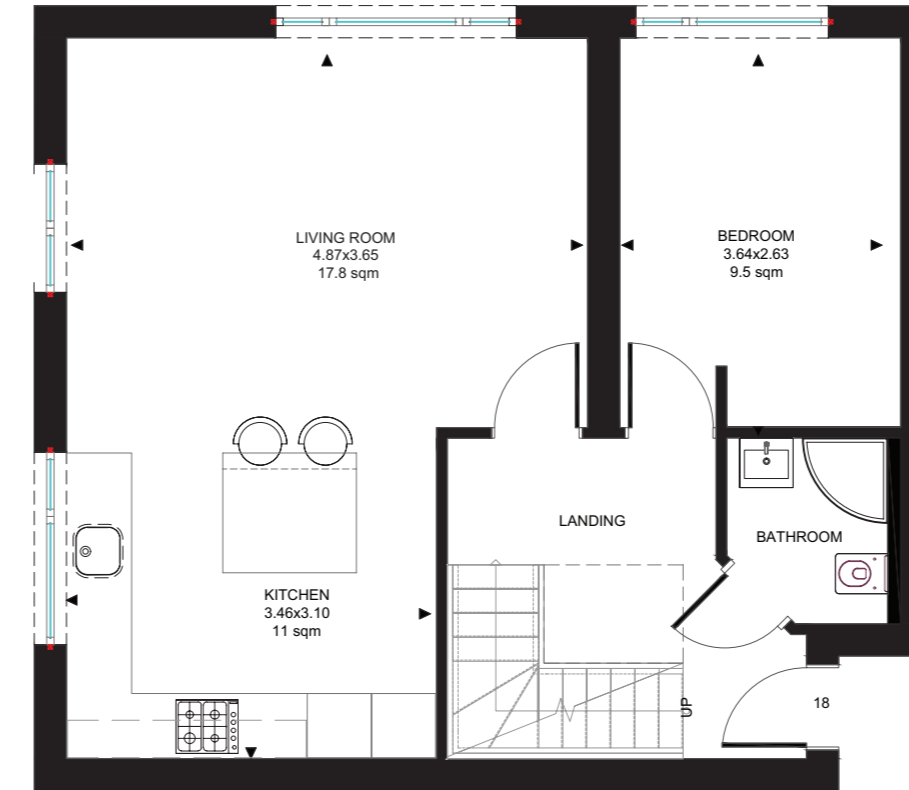
Introducing a rare offering of six high specification duplex apartments. Constructed in the airspace of an existing block, located on a popular residential street, moments away from the widely connected Sutton Railway Station & surrounding amenities found on Sutton High Street. This welcome addition to SM2 brings six generously sized three bedroom apartments with 3 1/2 bathrooms, spread across two floors & finished with modern interiors blended with a traditional twist.

From classic shaker style kitchens, complemented by modern quartz worktops & Siemens integrated appliances, the kitchens are truly a standout feature of these intelligently configured living spaces. You'll further benefit from a separate utility area, w/c on your main floor & LED strip lighting throughout. Each bathroom will benefit from a warm floor, premium sanitary ware & generous proportions. Video door access, off-street allocated parking and lift access are just some of the additional benefits this development offers.



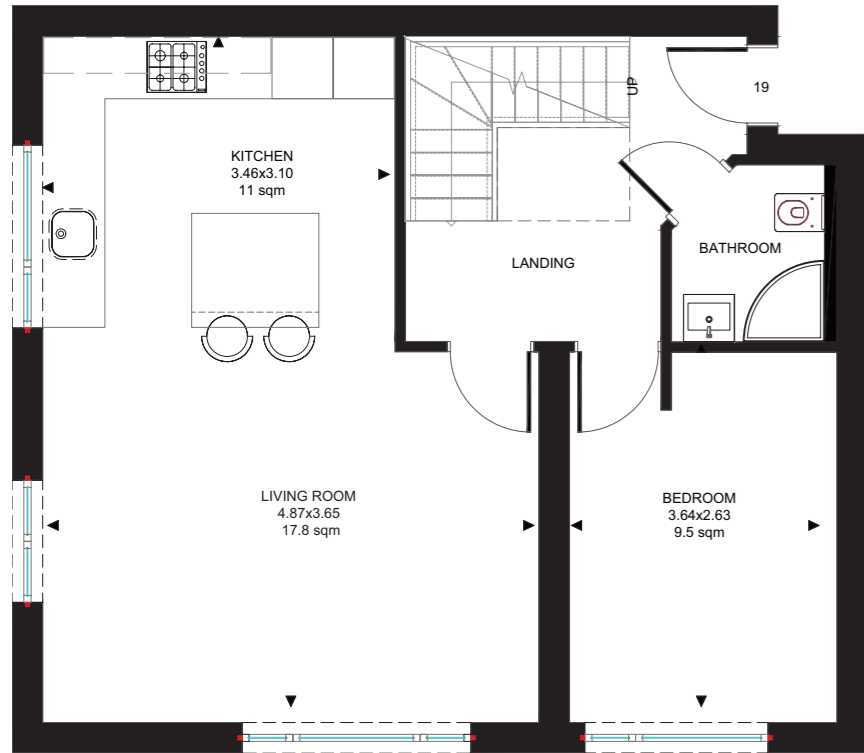
APARTMENT 1 - THREE BEDROOMS

3RD & 4th FLOOR - 91 SQM



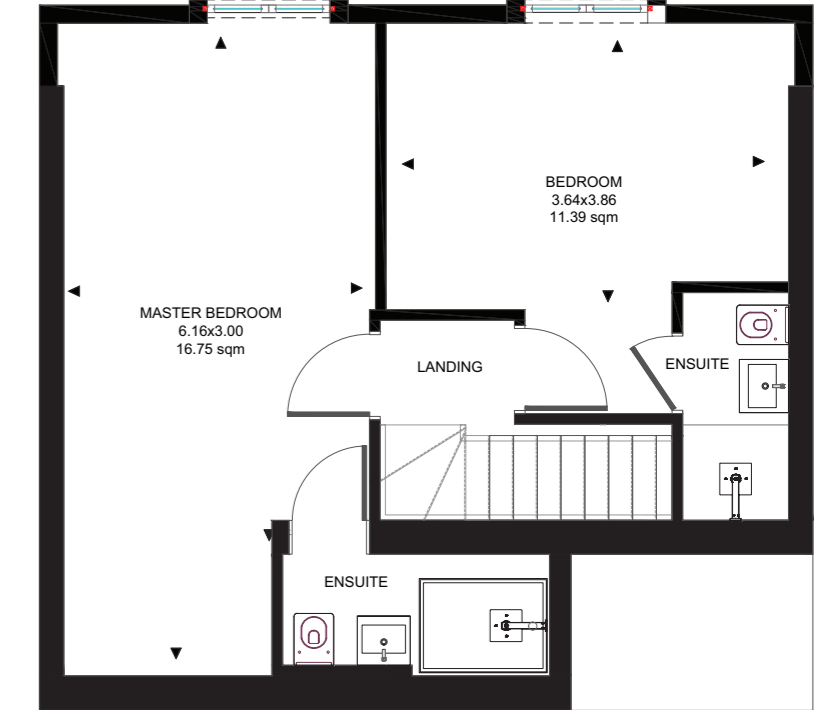
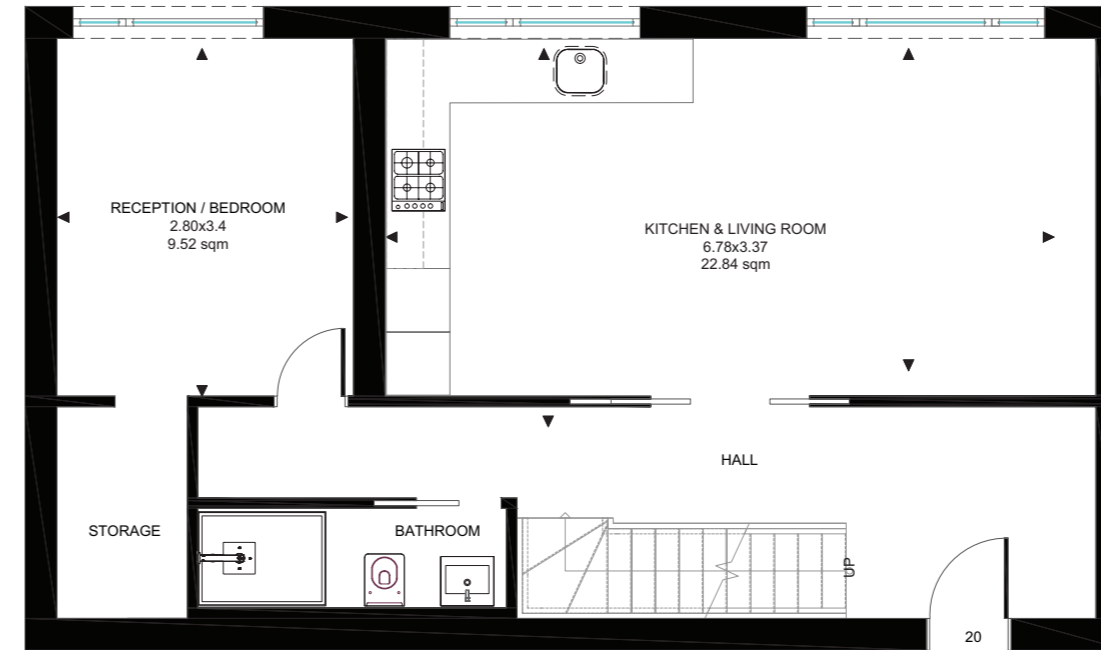
APARTMENT 2 - THREE BEDROOMS

3RD & 4th FLOOR - 91 SQM



APARTMENT 3 - THREE BEDROOMS

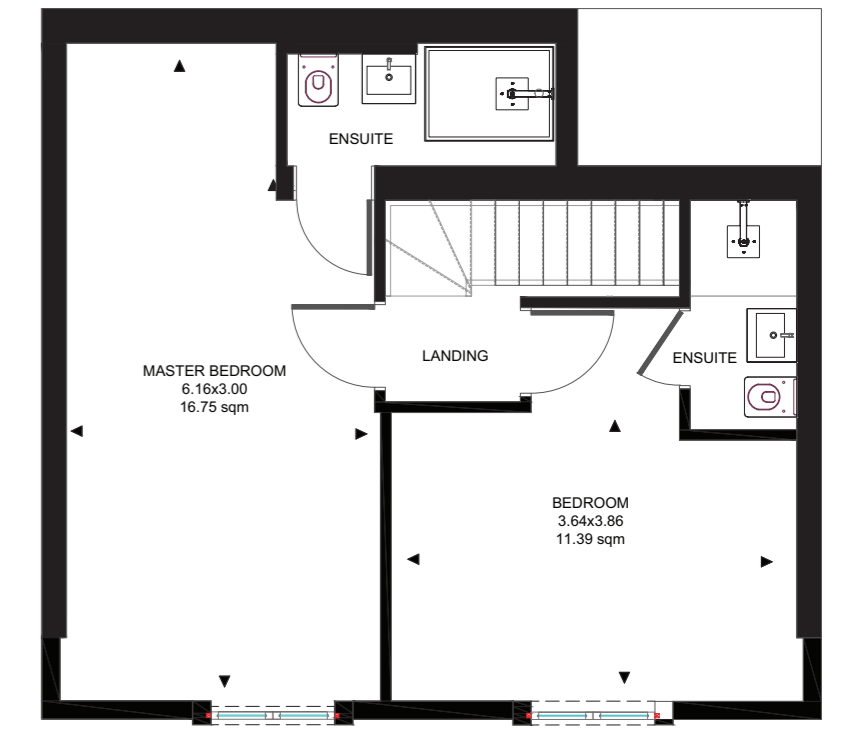
3RD & 4th FLOOR - 86 SQM



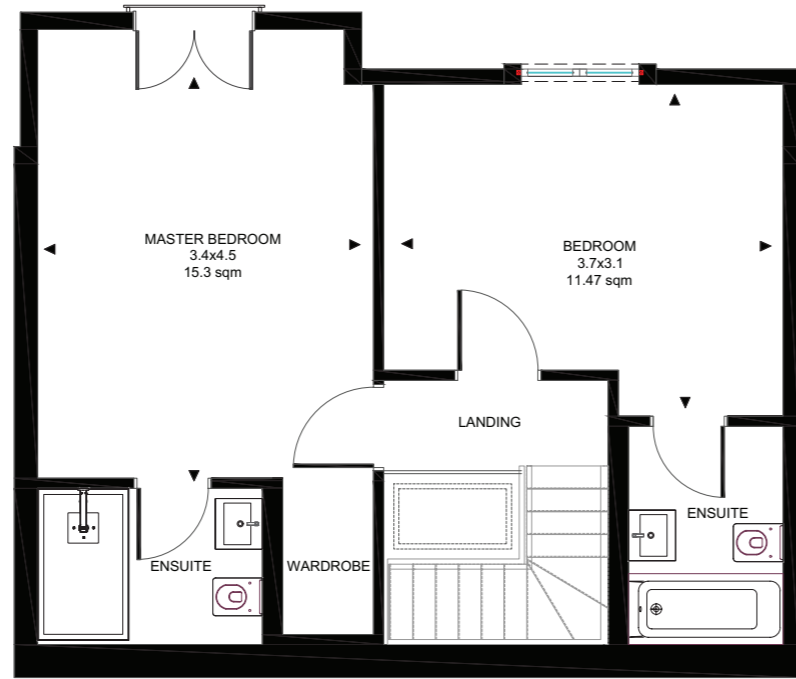
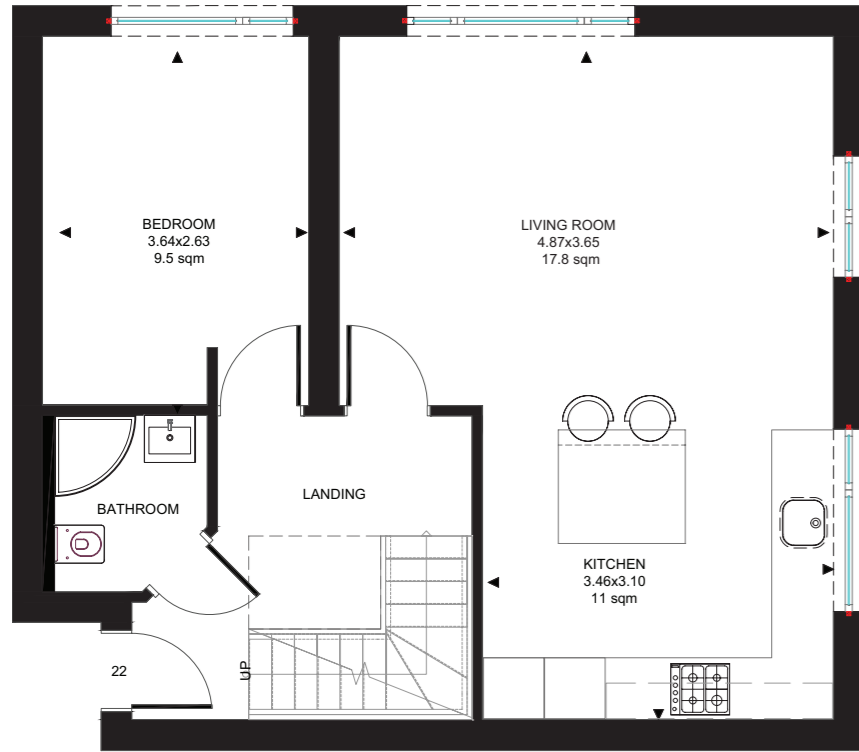


APARTMENT 4 - THREE BEDROOMS

3RD & 4th FLOOR - 86 SQM



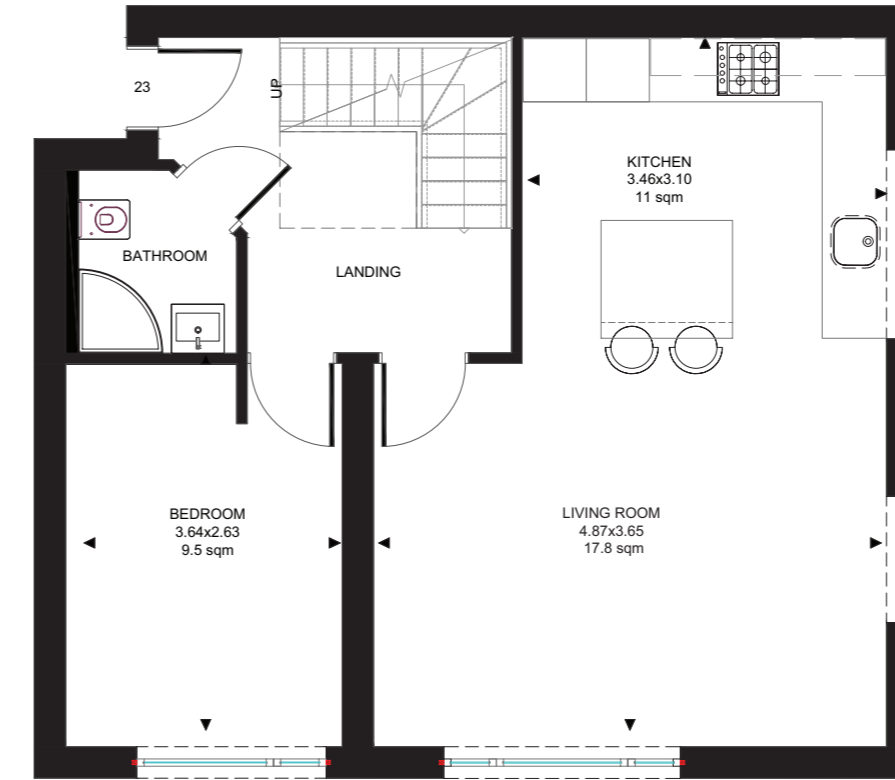
APARTMENT 5 - THREE BEDROOMS
3RD & 4th FLOOR - 92 SQM





APARTMENT 6 - THREE BEDROOMS

3RD & 4th FLOOR - 92 SQM





LOCATION / CONNECTIVITY

34 Mulgrave Road, Sutton

47 minutes - Sutton Station to St Pancras (Train)

42 minutes - Sutton Station to Waterloo (Train)

61 minutes - Mulgrave Road to Heathrow (Car)

35 minutes - Mulgrave Road to Gatwick (Car)

60 minutes - Mulgrave Road to Brighton (Car)



Heritage

- Honeywood Heritage Centre 1
- Carew Manor 2
- The Water Tower 3
- The Hermitage 4
- Little Holland House 5
- Whitehall 6

Parks & Nature

- Ecology Centre 7
- Carshalton Ponds 8
- The Grange 9
- Carshalton Park 10
- Wilderness Island 11
- Cheam Park 12
- Oaks Park 13
- Beddington Park 14
- Rosehill recreation ground 15
- Collingwood Road recreation ground 16
- The Wrythe recreation ground 17
- Nonsuch Mansion 18
- Roundshaw Downs 19
- Start of Oaks Park Nature Trail and Sutton Countryside Walk 20
- London LOOP Section 6 21
- Start of Wandle Trail 22

Entertainment

- Charles Crier Theatre 24
- Secombe Theatre 25
- UCI Cinema 26
- Sutton Superbowl 27

Sports & Leisure

- Sutton Junior Tennis Centre 28
- Sutton Arena Leisure Centre 29
- Cheam Leisure Centre 30
- Westcroft Leisure Centre 31
- Wallington Hall 32

- Library L Church + Car Park P
- Pedestrianised Street ■■■■■■■■
- Countryside Walk ●●●●●●●●

Average distance walked in 10 minutes



SUTTON HIGHLIGHTS

Lying on the lower slopes of the North Downs, the South London town of Sutton is located 10 miles (16 km) south-southwest of Charing Cross and has good transport links to Central London and other areas.

There's a good mix of independent and high street shops, a couple of shopping centres and a selection of restaurants and pubs. You'll also find a multiplex cinema and a theatre, sport and recreation clubs and facilities and numerous good schools.

Sutton has several parks and open spaces and two local nature reserves - Nonsuch Park & Grove Park are great places for a stroll.

The town is popular with renters, especially young families who are drawn to the area with some of the best performing schools in the country including Sutton Grammar School.

Sutton really does appeal to people of all age groups. With it's great transport links young professionals find the choice of three mainline stations a huge attraction as well as the local restaurants and nightlife.

Cheam is a lovely village in the borough of Sutton. With such great proximity to London you get the best of both worlds.



SPECIFICATION

KITCHEN

Each apartment will be finished with a top of the range shaker style kitchen, with white quartz worktops, featuring fully integrated Siemens appliances to include: Oven, built-in microwave, induction hob, stainless steel extractor fan, full-size dishwasher, instant hot water tap & wine cooler.

UTILITY

The washing machine / dryer (Siemens) will be built into a separate cupboard with a storage area for linens.

BATHROOMS

All bathrooms will be fit with a warm floor, controlled by a separate thermostat, enlarged porcelain tiles, slim shower trays (Aurora) or bathtub (Arezzo), glass screens, wall hung stone basin (Arezzo) LED vanity, wall hung toilets (Grohe) & towel radiators.

FURTHER SPEC

This will include:

- Engineered Wood Flooring throughout
- Premium blush carpets in all bedrooms
- Video door entry (intercom)
- Brushed steel sockets
- LED strip lighting and down lights throughout alongside so pendant lighting in the living rooms
- CAT6 cable run to each apartment and ethernet access points in most rooms
- Lift access
- Mechanical ventilation throughout each apartment to cycle fresh air into each room.
- Additional w/c on the main floor of each apartment (with the kitchen & living rooms)
- Double glazing acoustic glass for sound proofing and energy efficiency
- Solid internal fire rated doors
- Off-street parking
- An opportunity to purchase a brand new garage (subject to additional cost.)
- A modern colour neutral colour scheme throughout (unless specified otherwise*.)
- 10 Year structural warranty
- Long Lease

*Disclaimer - Until a specified deadline you do have the opportunity to modify or request alternative finishes in certain areas (this may come at additional cost - speak to agent.)

**CONTACT JAMES GODDARD ON
THE DETAILS BELOW TO EXPLORE
34 MULGRAVE ROAD FOR YOURSELF.**

James Goddard
jamesgoddard@exp.uk.com
020 3146 7080

34 MULGRAVE ROAD

SUTTON | GREATER LONDON

34

For more information please contact:

James Goddard

jamesgoddard@exp.uk.com

020 3146 7080

POWERED BY
exp™ UK

DISCLAIMER: All the images and renders seen on this document are subject to change throughout the building process. The finished article may vary in design or specification, but every effort will be made to replicate the finishes & specification in the renders where possible.

 **RAOCON**