

**7, Ivinghoe House, 23 Church Road**

Guide Price £290,000

🛏 2 🚿 2 🚗 1

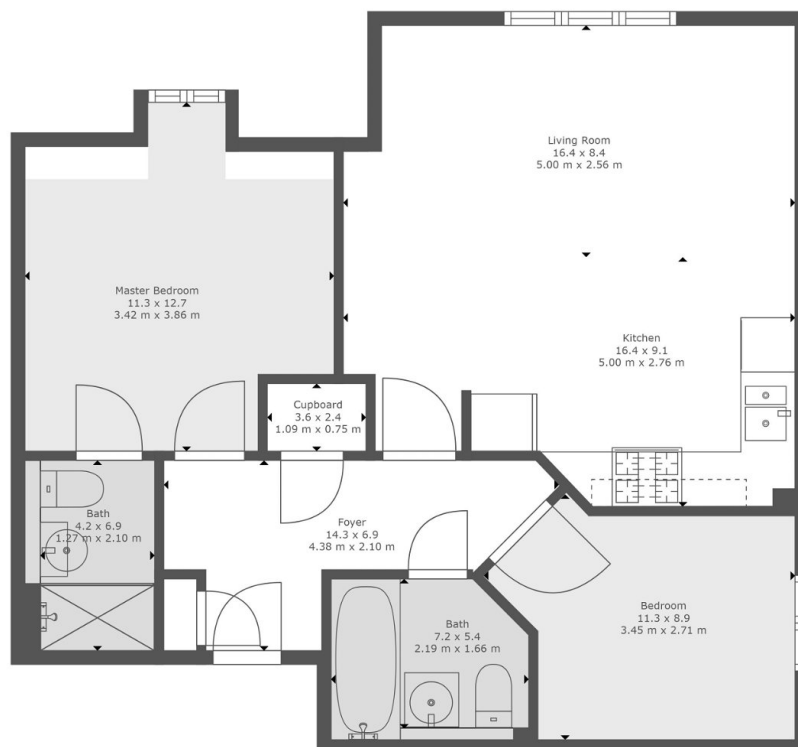


**PLEASE QUOTE LT0751 FOR ALL ENQUIRIES**

Beautifully presented 2 bedroom penthouse apartment (627 Sq.Ft) close to Uxbridge and Brunel University offering off street parking and beautiful communal gardens. Offering bright and spacious accommodation, with modern interiors, modern design and neutral finish throughout.

## Key Features

- 2 Double Bedrooms
- 2 Bathrooms
- Allocated Parking
- Penthouse apartment
- 627 sqft
- Well Maintained Communal Gardens
- EPC rating - C
- Modern kitchen
- Close to Uxbridge & Brunel University
- Ample Storage



**TOTAL: 627 sq. ft, 58 m<sup>2</sup>**  
FLOOR 1: 627 sq. ft, 58 m<sup>2</sup>  
EXCLUDED AREAS: LOW CEILING: 9 sq. ft, 0 m<sup>2</sup>

For Illustrative Purposes Only, Confirm Measurements Prior To Making Any Decisions.

