

Flat 16, J F K House, Royal Connaught Drive

£525,000

🛏 2 🚿 2 🚻 1



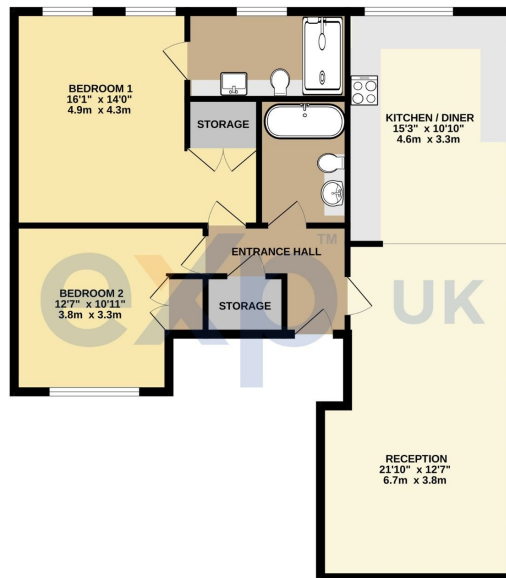
Ref: MS0129

Situated in the prestigious gated development of Royal Connaught Park is this spacious ground floor apartment. Located for easy access to Bushey High Street with its array of good restaurants and local shopping, Bushey Station (via a shuttle bus from the development) offering a 20 minute fast service into London Euston, as well as Access to Watford Town centre, good local schools as well as excellent road transport links to M1, A41 and M25.

This property has come to market in very good decorative order and benefits include a modern upgraded kitchen and bathrooms. The development offers its residents landscaped Communal Grounds, Swimming Pool, Gymnasium, Allocated Parking For Two Cars, 24 Hour Security. NO UPPER CHAIN

- 2 DOUBLE BEDROOMS
- HIGH SPEC MODERN FITTED KITCHEN
- GROUND FLOOR LEVEL ACCESS
- FITNESS CENTRE WITH GYM & SWIMMING POOL
- NO UPPER CHAIN
- OPEN PLAN MODERN LIVING SPACE
- 2 BATHROOMS
- 2 ALLOCATED PARKING SPACES
- STUNNING COMMUNAL SETTING
- SHUTTLE BUS TO BUSHEY AND STATION

GROUND FLOOR
921 sq.ft. (85.5 sq.m.) approx.



TOTAL FLOOR AREA: 921 sq.ft. (85.5 sq.m.) approx.
Whilst every attempt has been made to ensure the accuracy of the description contained here, measurements of doors, windows, rooms and any other items are approximate and no responsibility is taken for any error, omission or misstatement. This plan is for illustrative purposes only and should be used as such by any prospective purchaser. The services, fixtures and appliances shown here are not intended and no guarantee, as to their availability or otherwise can be given.
 Made with Maptek CIVIL3D