

Oakhill Court, Edge Hill, Wimbledon, SW19

£580,000

🛏 2 🚿 1 🚗 1

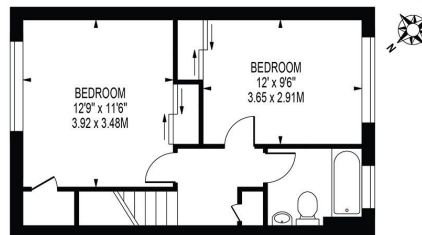


Very well presented two double bedroom split level maisonette (801 Sq.Ft) with private entrance, garage and balcony overlooking beautifully maintained communal gardens, superbly situated in a sought after Wimbledon location. Ideal for homeowner or investor alike, the property provides superbly appointed accommodation laid out over two floors, with neutral finish and modern interiors throughout. Features include a generous open plan reception/dining room, well equipped kitchen, modern upstairs bathroom, ample inbuilt storage, quality floor coverings, gas central heating and double glazing.

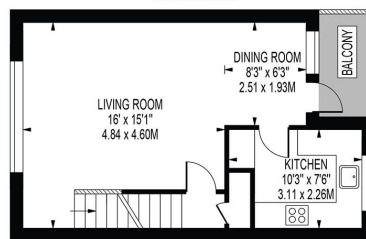
Key Features

- Beautifully Presented Two Double Bedroom Split Level Maisonette (801 Sq.Ft)
- Modern Interiors and Neutral Finish
- Private Balcony
- Modern Bathroom
- Stunning Communal Gardens
- Sought After Wimbledon Location
- Bright and Spacious Open Plan Reception/Dining Room
- Separate Well Equipped Kitchen
- Private Garage and Own Entrance
- Close to Transport Links, Schools and Amenities

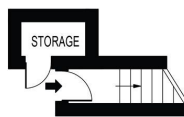
OAKHILL COURT
 APPROXIMATE GROSS INTERNAL FLOOR AREA: 801 SQ FT - 74.37 SQ M
(EXCLUDING GARAGE & STORAGE)
 APPROXIMATE GROSS INTERNAL FLOOR AREA OF GARAGE: 135 SQ FT - 12.55 SQ M
 APPROXIMATE GROSS INTERNAL FLOOR AREA OF STORAGE: 14 SQ FT - 1.34 SQ M



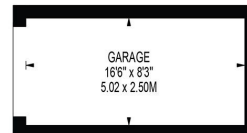
SECOND FLOOR



FIRST FLOOR



GROUND FLOOR ENTRANCE



FOR ILLUSTRATION PURPOSES ONLY

THIS FLOOR PLAN SHOULD BE USED AS A GENERAL OUTLINE FOR GUIDANCE ONLY AND DOES NOT CONSTITUTE IN WHOLE OR IN PART AN OFFER OR CONTRACT. ANY INTENDING PURCHASER OR LESSEE SHOULD SATISFY THEMSELVES BY INSPECTION, SEARCHES, ENQUIRIES AND FULL SURVEY AS TO THE CORRECTNESS OF EACH STATEMENT. ANY AREAS, MEASUREMENTS OR DISTANCES QUOTED ARE APPROXIMATE AND SHOULD NOT BE USED TO VALUE A PROPERTY OR BE THE BASIS OF ANY SALE OR LET.