

## Flat 7, 73, Anerley Road

Guide Price £425,000

🛏 0 🚗 0 🚲 0

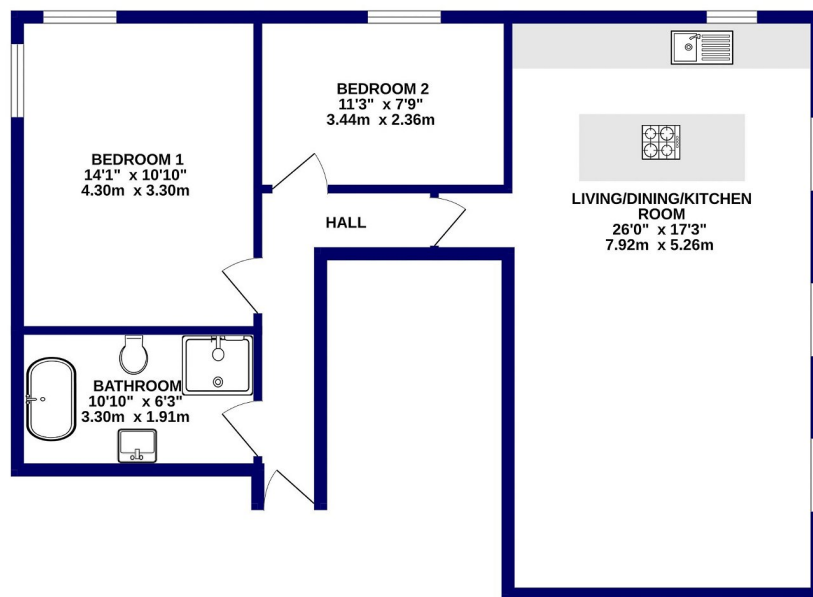


Please Quote Ref; TH0310 For All Enquiries - Beautifully presented ground floor two-bedroom apartment (772 sq.ft) situated a stone's throw from the ever-popular Crystal Palace Park. A well maintained share of free hold building that benefits of off-street parking.

## Key Features

- Guide Price £425,000 - £450,000
- Two-Bedroom Ground Floor Apartment
- Share Of Freehold
- Open Plan Kitchen/Dinning/Living Room
- Off Street Parking
- Kitchen Island With Built-in Hob
- Great Local Bars, Cafes And Restaurants
- 0.3Miles From Crystal Palace Station (National Rail & London Overground)
- Close To Crystal Palace Park On A Prime Road
- Please Quote Ref; TH0310

GROUND FLOOR  
772 sq.ft. (71.7 sq.m.) approx.



TOTAL FLOOR AREA: 772 sq.ft. (71.7 sq.m.) approx.

Whilst every attempt has been made to ensure the accuracy of the floorplan contained here, measurements of doors, windows, rooms and any other items are approximate and no responsibility is taken for any error, omission or mis-measurement. This plan is for illustrative purposes only and should be used as such by any prospective purchaser. The services, systems and appliances shown have not been tested and no guarantee as to their operability or efficiency can be given.